

BOM

Resistors

R1	1M
R2	33k
R3	1M
R4	3.3k
R5	22k
R6	10k
R7	3.3k
R8	3.3k
R9	390k
R10	15k
R11	68k
R12	10k
R13	200k
R14	2.2k
R15	200k
R16	100Ω
R17	10k
R18	10k
CLR	4.7k

Capacitors

C1	33n
C2	1.5n
C3	680n
C4	2.2n
C5	68n

C6	330p
C7	4.7n
C8	68n
C9	150n
C10	1μ
C11	1μ
C12	3.3μ
C13	100μ
C14	100n
C15	100μ

Semiconductors

D1	3mm red diffused LED
D2	3mm red diffused LED
D3	1N4148
D4	1N4148
D5	1N4148
D6	1N5817
IC1	RC4558
Q1	2N5457 or MMBF5457
Q2	2N5457 or MMBF5457
Q3	2N5088 or similar

Electromechanical

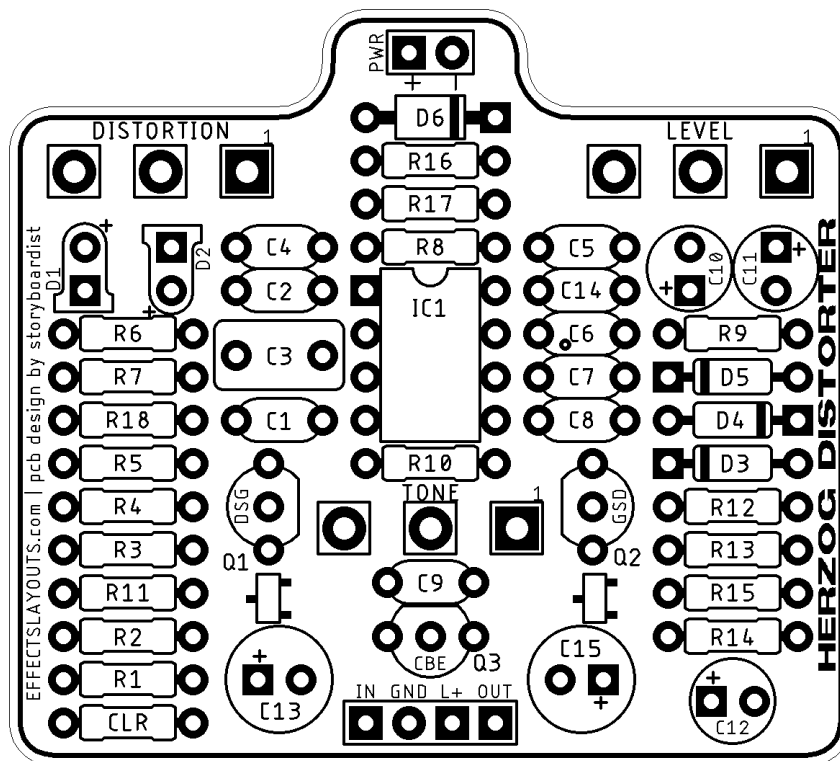
Distortion	B250k
Level	A50k
Tone	B50k

SHOPPING LIST

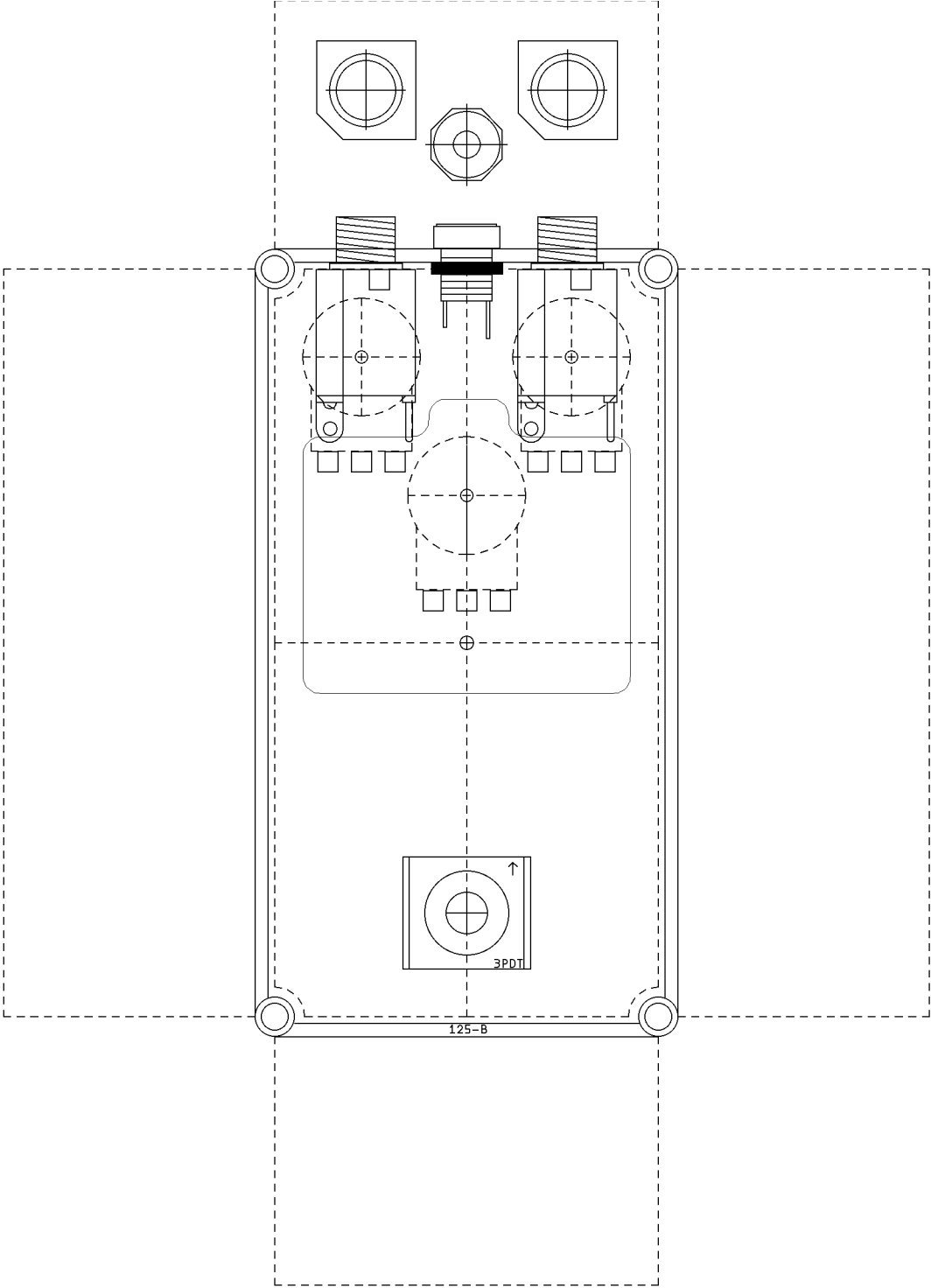
Value	Type (suggested)	Quantity
100Ω	¼ watt metal or carbon film	1
2.2k	¼ watt metal or carbon film	1
3.3k	¼ watt metal or carbon film	3
4.7k	¼ watt metal or carbon film	1
10k	¼ watt metal or carbon film	4
15k	¼ watt metal or carbon film	1
22k	¼ watt metal or carbon film	1
33k	¼ watt metal or carbon film	1
68k	¼ watt metal or carbon film	1
200k	¼ watt metal or carbon film	2
390k	¼ watt metal or carbon film	1

1M	¼ watt metal or carbon film	2
330p	Ceramic	1
1.5n	Film	1
2.2n	Film	1
4.7n	Film	1
33n	Film	1
68n	Film	2
100n	Ceramic	1
150n	Film	1
680n	Film	1
1µ	Electrolytic (25v+)	2
3.3µ	Electrolytic (25v+)	1
100µ	Electrolytic (25v+)	2
1N4148	Silicon switching diode	3
1N5817	Schottky rectifier diode	1
2N5088	BJT	1
2N5457	JFET	2
LED	3mm red diffused	2
RC4558	Dual op-amp	1
A50k	16mm right angle PC mount potentiometer	1
A250k	16mm right angle PC mount potentiometer	1
B50k	16mm right angle PC mount potentiometer	1

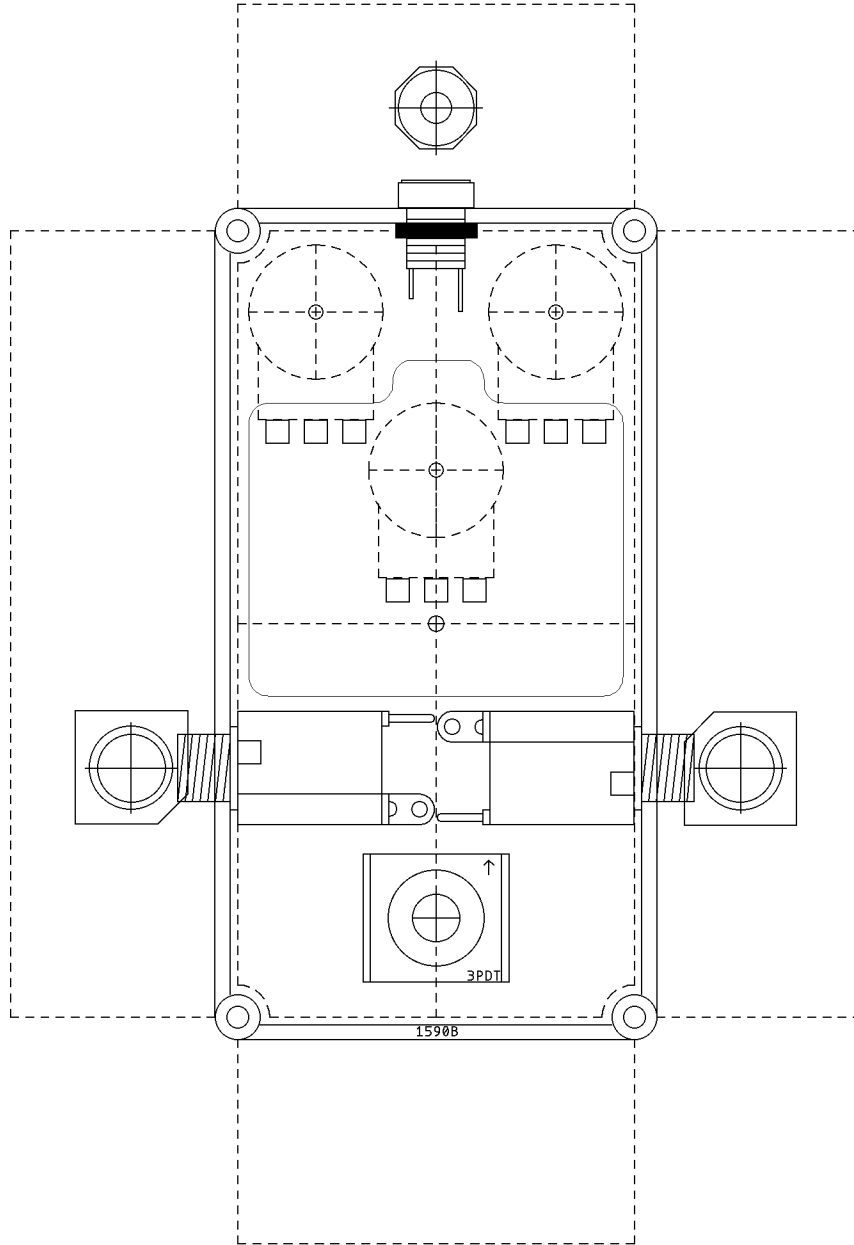
LAYOUT



125B DRILL TEMPLATE



1590B DRILL TEMPLATE



EFFECTS LAYOUTS © 2023
For DIY and small commercial applications.
Not for non-peer to peer resale.