

BOM

Resistors

R1	47k
R2	470k
R3	47k
R4	12k
R5	470Ω
R6	1k
R7	1k
R8	100k
R9	220k
R10	1k
R11	22k
R12	1k
R13	2.2k
R14	12k
R15	47k
R16	12k
R17	12k
R18	100Ω
CLR1	4.7k
CLR2	4.7k

Capacitors

C1	100p
C2	10n
C3	4.7μ
C4	100n
C5	100n

C6	1n
C7	10n
C8	47μ
C9	1μ
C10	10n
C11	1μ
C12	6.8n
C13	1n
C14	470p
C15	100μ

Semiconductors

D1	1N5817
LED1	5mm LED
LED2	Bi-color 5mm LED
Q1	2N5089
Q2	2N3904
Q3	2N1302 or similar NPN germanium

Electromechanical

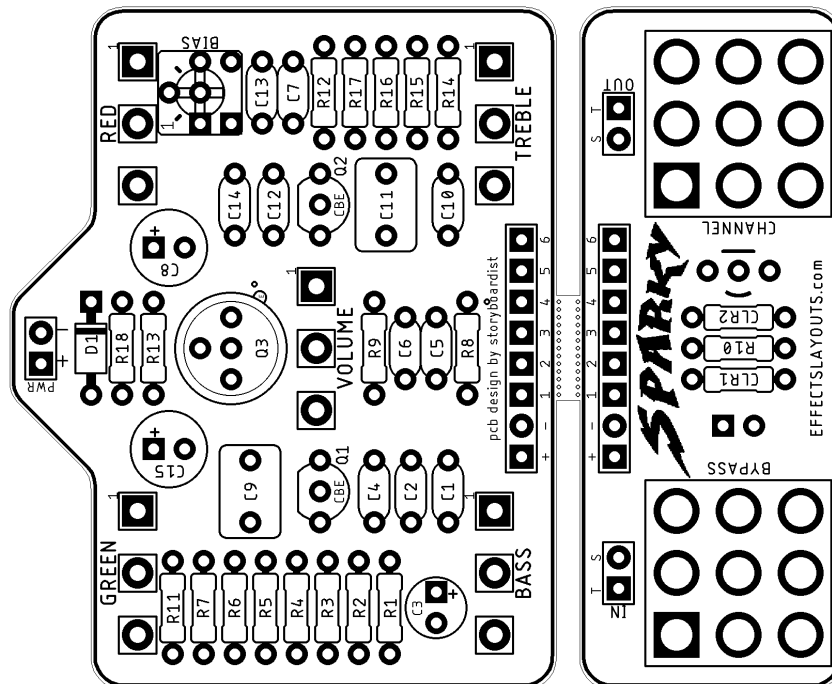
Bass	B100k
Bypass	3PDT footswitch
Channel	3PDT footswitch
Green	A500k
Red	A500k
Treble	B25k
Volume	B100k

SHOPPING LIST

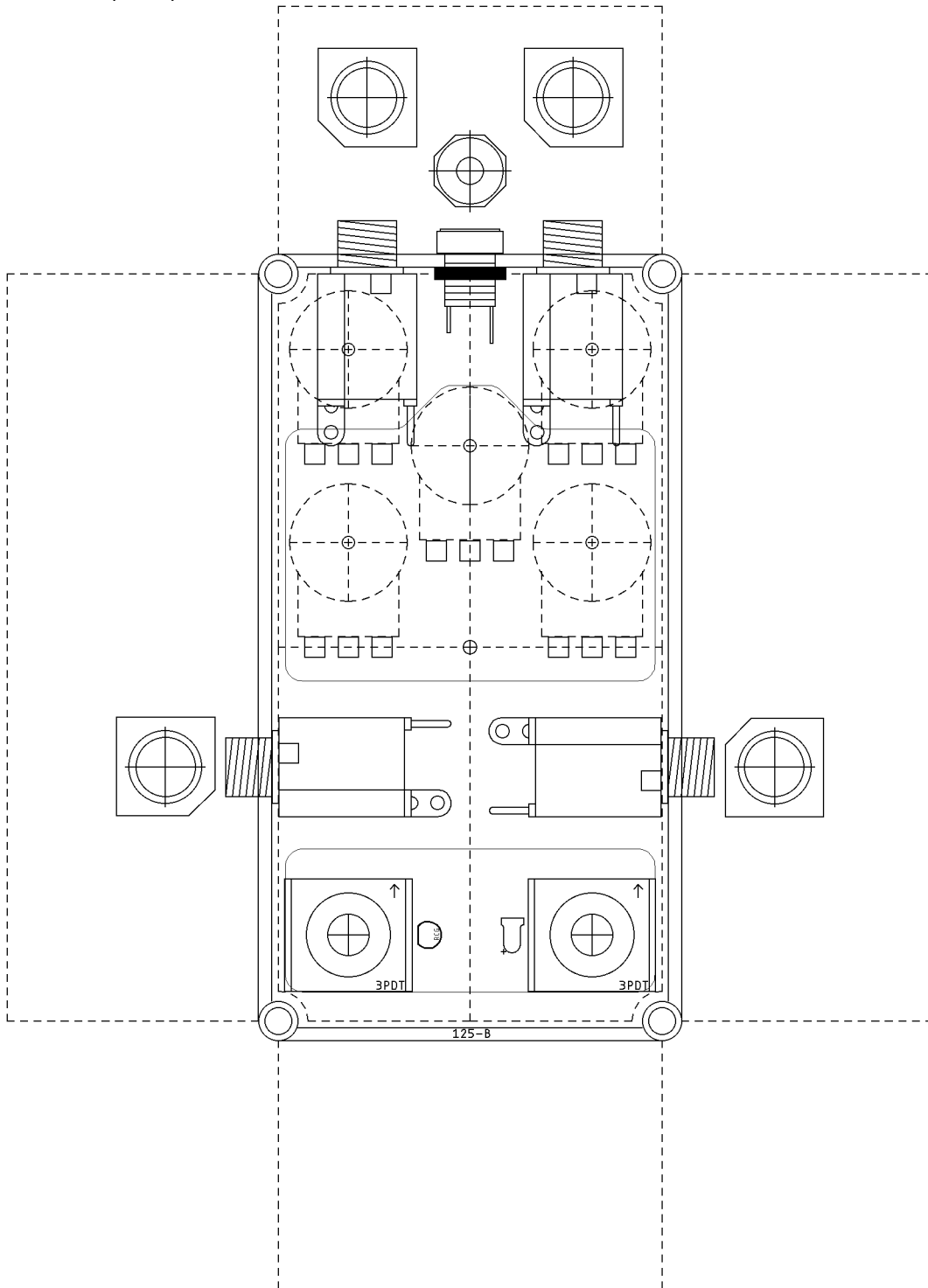
Value	Type (suggested)	Quantity
100Ω	¼ watt metal or carbon film	1
470Ω	¼ watt metal or carbon film	1
1k	¼ watt metal or carbon film	4
2.2k	¼ watt metal or carbon film	1
12k	¼ watt metal or carbon film	4
22k	¼ watt metal or carbon film	1
47k	¼ watt metal or carbon film	3

100k	¼ watt metal or carbon film	1
220k	¼ watt metal or carbon film	1
470k	¼ watt metal or carbon film	1
100p	Ceramic	1
470p	Ceramic	1
1n	Film	2
6.8n	Film	1
10n	Film	3
100n	Film	2
1µ	Film	2
4.7µ	Electrolytic (25v+)	1
47µ	Electrolytic (25v+)	1
100µ	Electrolytic (25v+)	1
1N5817	Schottky rectifier diode	1
2N1302	Germanium NPN BJT	1
2N3904	Silicon NPN BJT	1
2N5089	Silicon NPN BJT	1
LED1	5mm LED	1
LED2	5mm Bi-color LED	1
3PDT	footswitch	2
A500k	16mm board mounted potentiometer	2
B25k	16mm board mounted potentiometer	1
B100k	16mm board mounted potentiometer	2

LAYOUT



DRILL TEMPLATE (125B)



EFFECTS LAYOUTS © 2023
For DIY and small commercial applications.
Not for non-peer to peer resale.