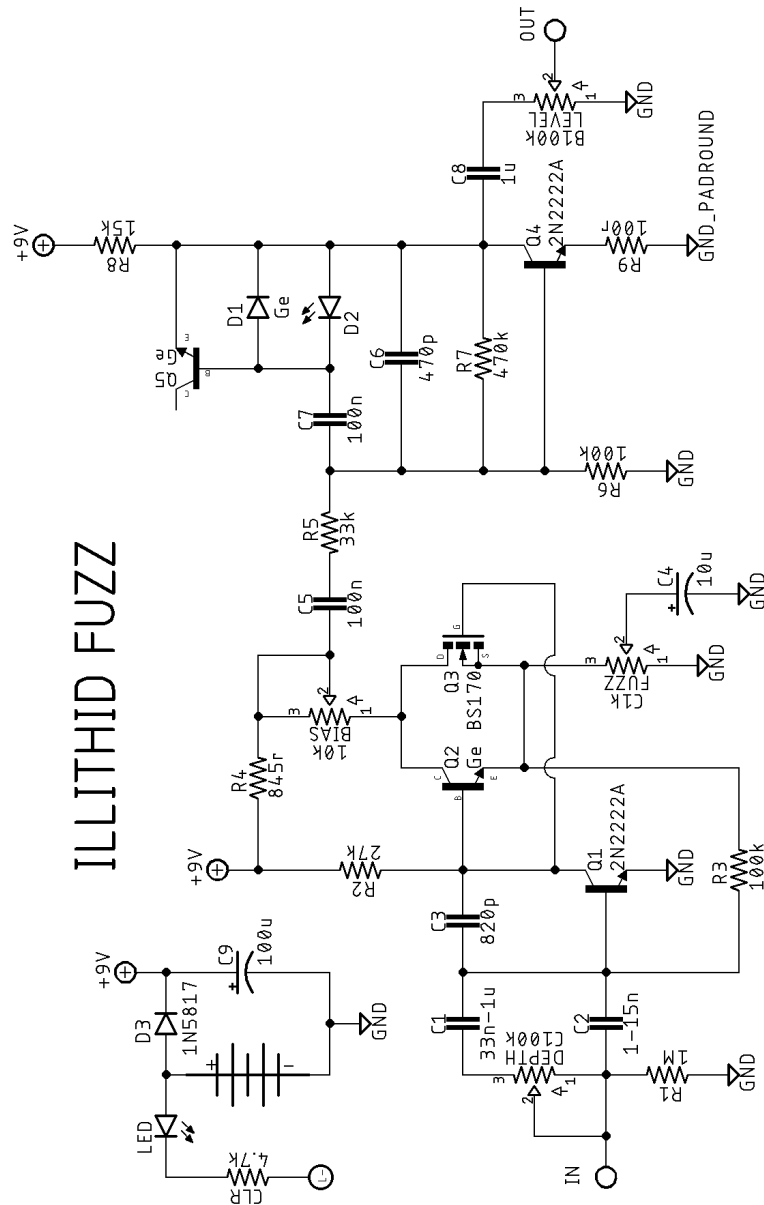


ILLITHID

DESCRIPTION

The ILLITHID is a hybrid silicon/germanium/MOSFET fuzz based on the 3-knob Dunwich Cthulhu Fuzz. The first stage is essentially a Fuzz Face with a pot panning between 2 different input caps, along with a MOSFET stacked on a germanium transistor. This is fed into a modified Big Muff gain stage with germanium and LED clipping.

SCHEMATIC



BOM

Resistors

R1	1M
R2	27k
R3	100k
R4	845Ω
R5	33k
R6	100k
R7	470k
R8	15k
R9	100Ω
CLR	4.7k

Capacitors

C1	33n-1μ
C2	1-15n
C3	820p
C4	10μ
C5	100n
C6	470p
C7	100n
C8	1μ

C9	100μ
----	------

Semiconductors

D1	Germanium*
D2	Red 3mm LED
D3	1N5817
Q1	2N2222A
Q2	Germanium
Q3	BS170
Q4	2N2222A
Q5	Germanium*

Electromechanical

Depth	C100k
Fuzz	C1k
Level	B100k

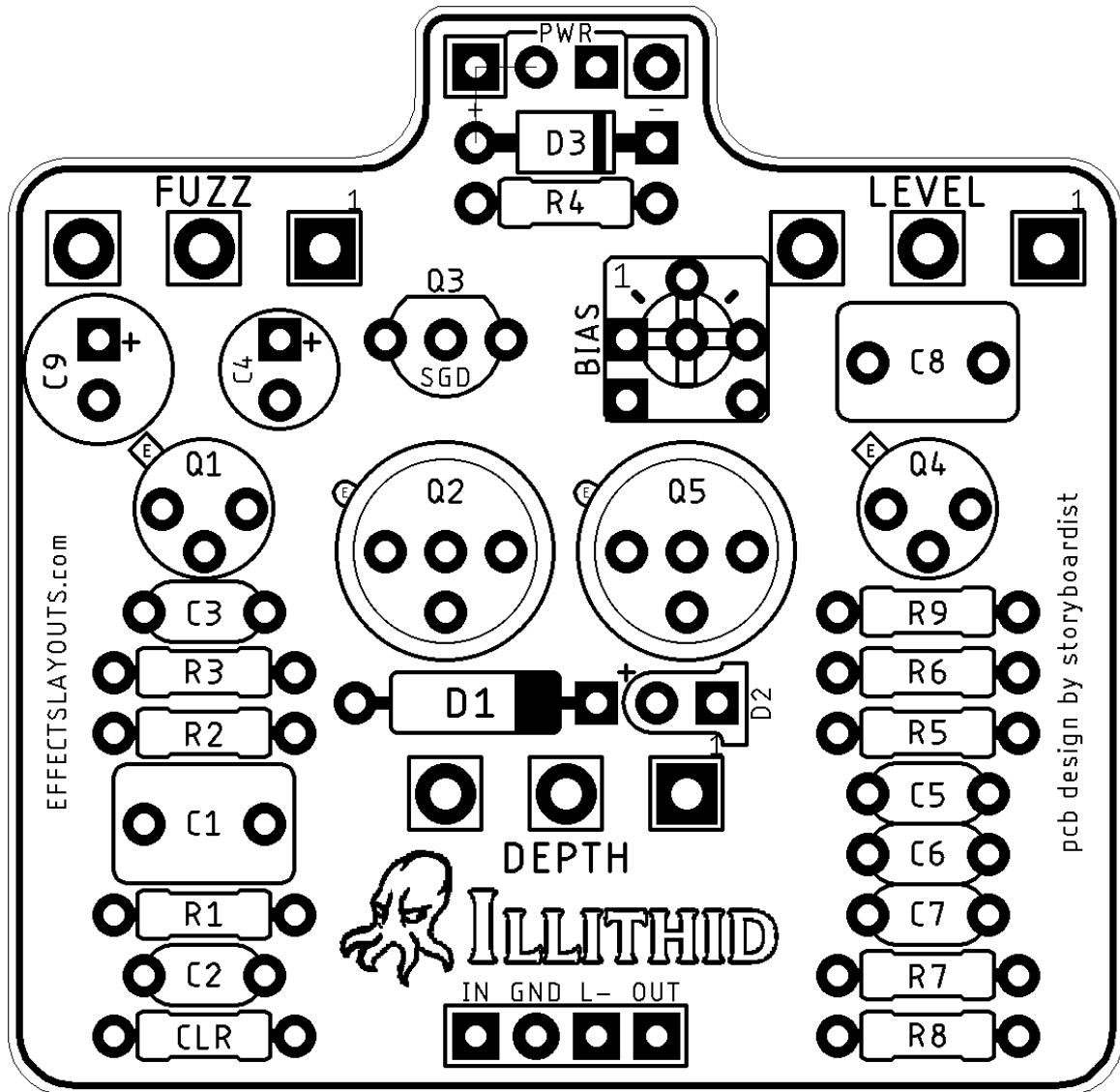
*There is no need to populate both D1 and Q5, as Q5 is wired as a diode. Socket and experiment to see what sounds best to you.

SHOPPING LIST

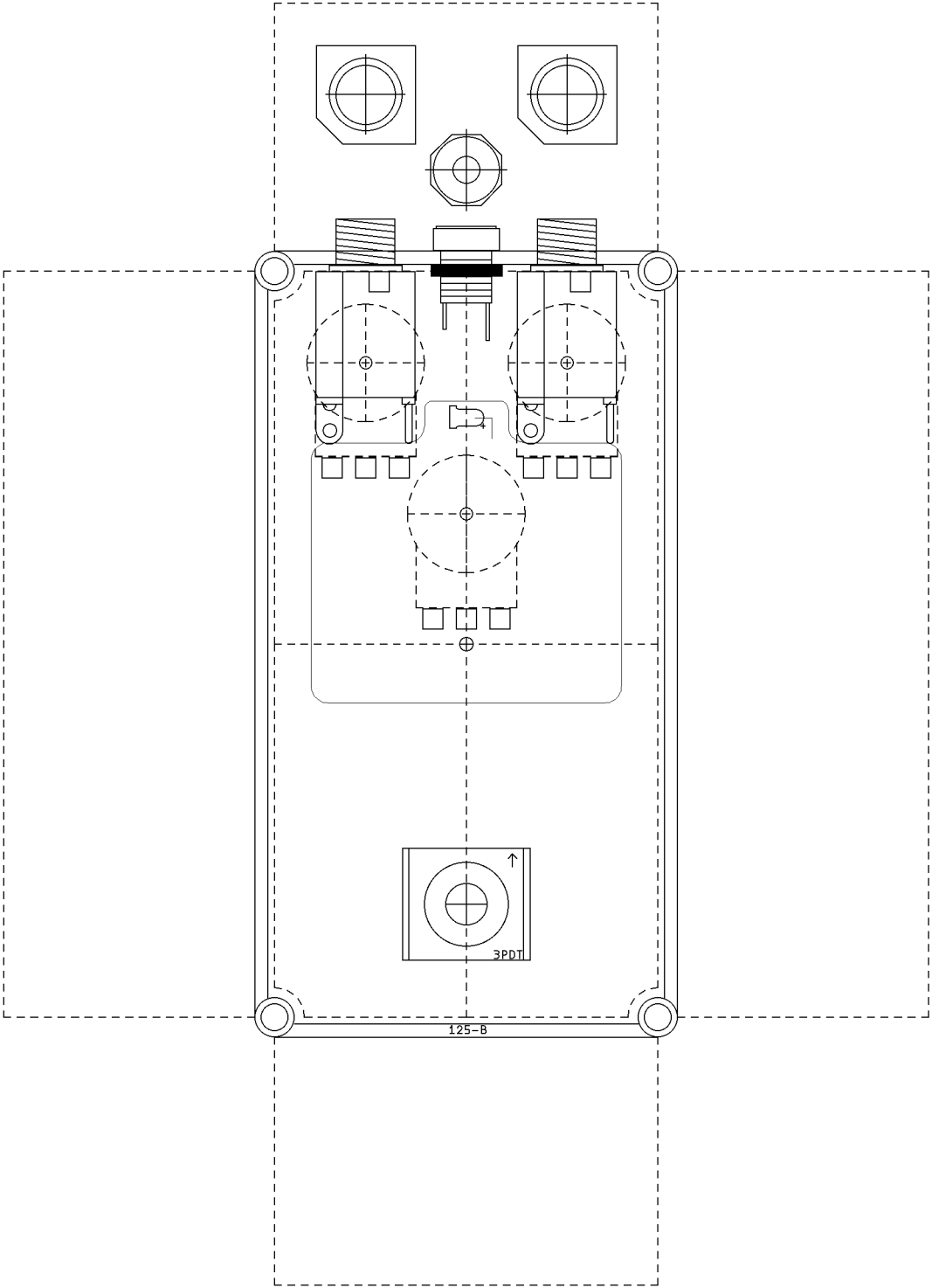
Value	Type (suggested)	Quantity
100Ω	¼ watt metal or carbon film	1
845Ω	¼ watt metal or carbon film	1
4.7k	¼ watt metal or carbon film	1
15k	¼ watt metal or carbon film	1
27k	¼ watt metal or carbon film	1
33k	¼ watt metal or carbon film	1
100k	¼ watt metal or carbon film	2
470k	¼ watt metal or carbon film	1
1M	¼ watt metal or carbon film	1
470p	Ceramic	1
820p	Ceramic	1
1-15n	Film	1
33n-1μ	Film	1
100n	Film	2
1μ	Film	1
10μ	Electrolytic (25v+)	1
100μ	Electrolytic (25v+)	1
1N5817	Schottky rectifier diode	1
2N2222A	BJT	2
BS170	MOSFET	1

Germanium transistor	BJT	1
Germanium transistor/diode		1
LED	3mm red	1
B100k	16mm right angle PC mount	1
Bias	Trimmer	1
C1k	16mm right angle PC mount	1
C100k	16mm right angle PC mount	1

LAYOUT

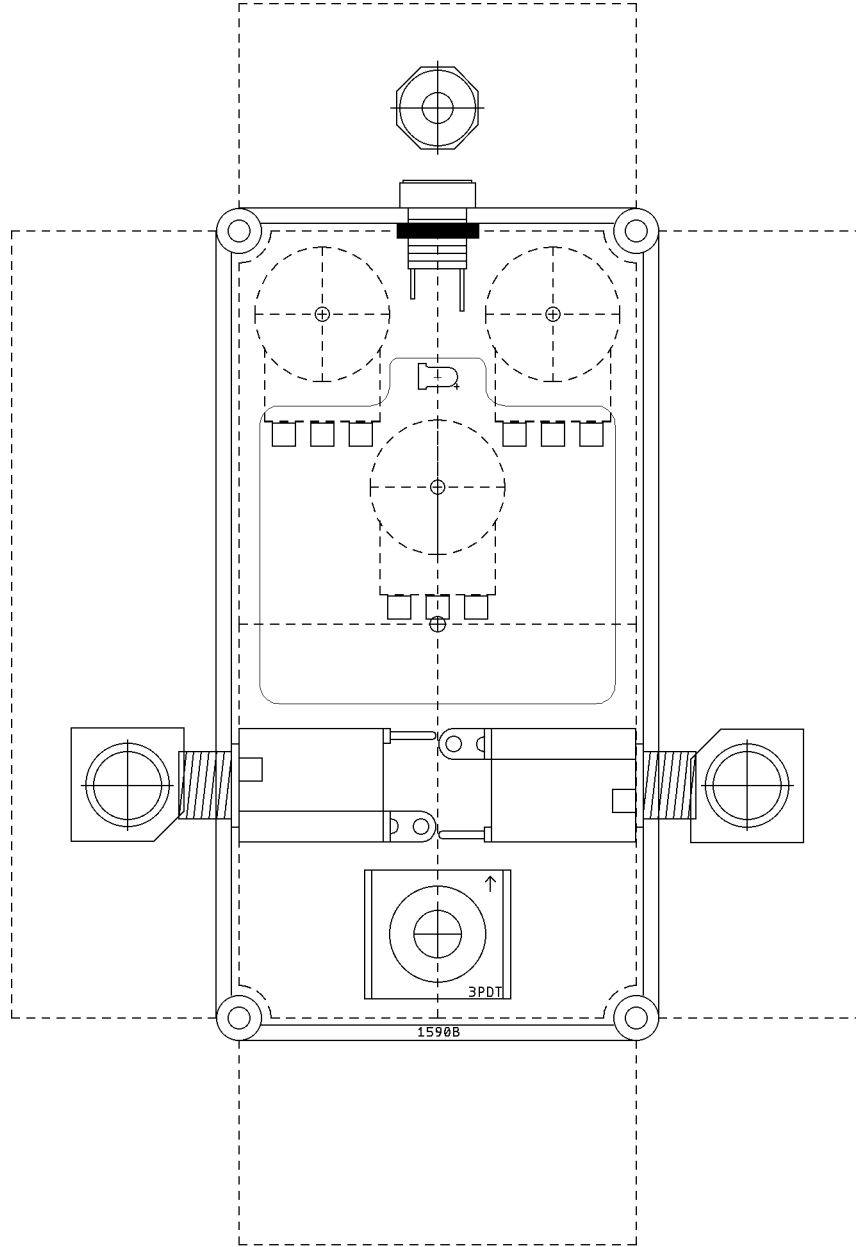


DRILL TEMPLATE (125B)



125-B

DRILL TEMPLATE (1590B)



EFFECTS LAYOUTS © 2023
For DIY and small commercial applications.
Not for non-peer to peer resale.