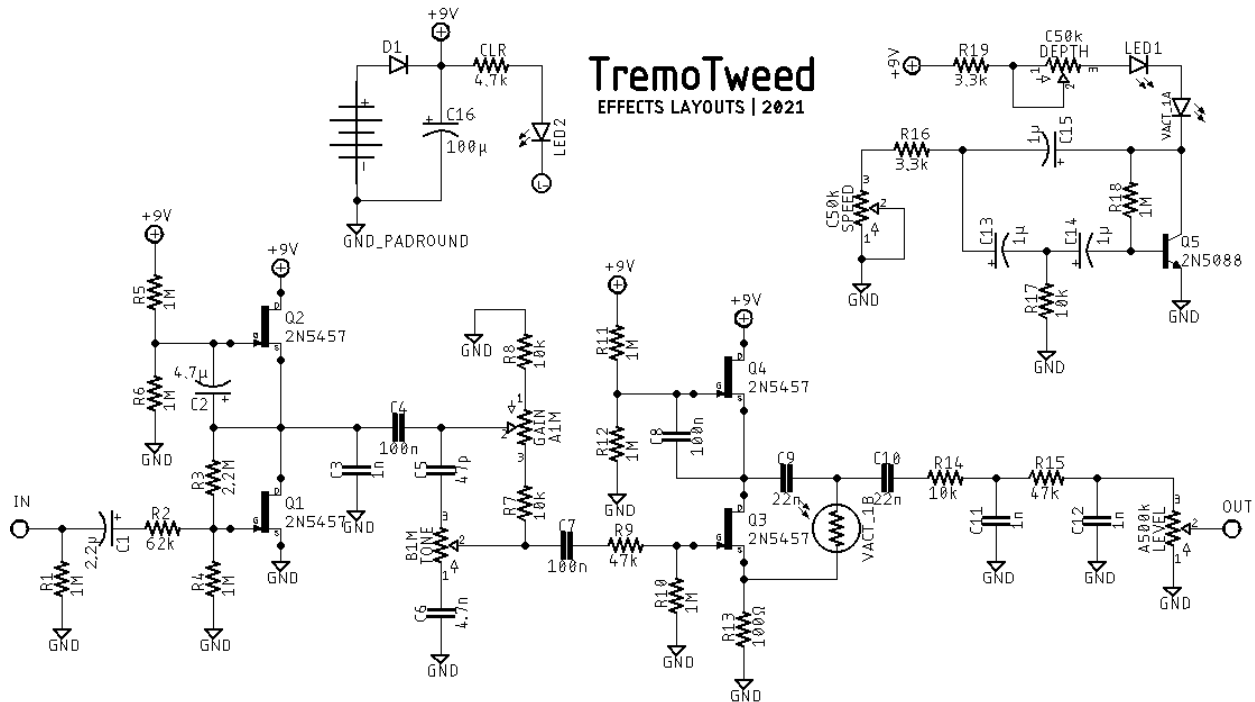


# TremoTweed

## DESCRIPTION

The TREMOtWEED is the result of wanting a low parts count Tweed-sounding overdrive with tremolo built in. To do this I went with mu-amp configured JFETs as in many Catalinbread circuits and added an LDR to the last stage and coupled it with the simple LFO used in the Heart Throb and EA tremolos.

## SCHEMATIC



## BOM

### Resistors

R1	1M
R2	62k
R3	2.2M
R4	1M
R5	1M
R6	1M
R7	10k
R8	10k
R9	47k
R10	1M
R11	1M

R12	1M
R13	100Ω
R14	10k
R15	47k
R16	3.3k
R17	10k
R18	1M
R19	3.3k
CLR	4.7k

### Capacitors

C1	2.2μ
C2	4.7μ
C3	1n
C4	100n
C5	47p
C6	4.7n
C7	100n
C8	100n
C9	22n
C10	22n
C11	1n
C12	1n
C13	1μ
C14	1μ
C15	1μ
C16	100μ

### Semiconductor

D1	1N5817
LED1	3 or 5mm LED
LED2	3 or 5mm LED

Q1	2N5457 or MMBF5457
Q2	2N5457 or MMBF5457
Q3	2N5457 or MMBF5457
Q4	2N5457 or MMBF5457
Q5	2N5088
Vact_1	VTL5C2

### Electromechanical

Depth	C50k
Gain	A1M
Level	A500k
Speed	C50k
Tone	B1M

### Notes

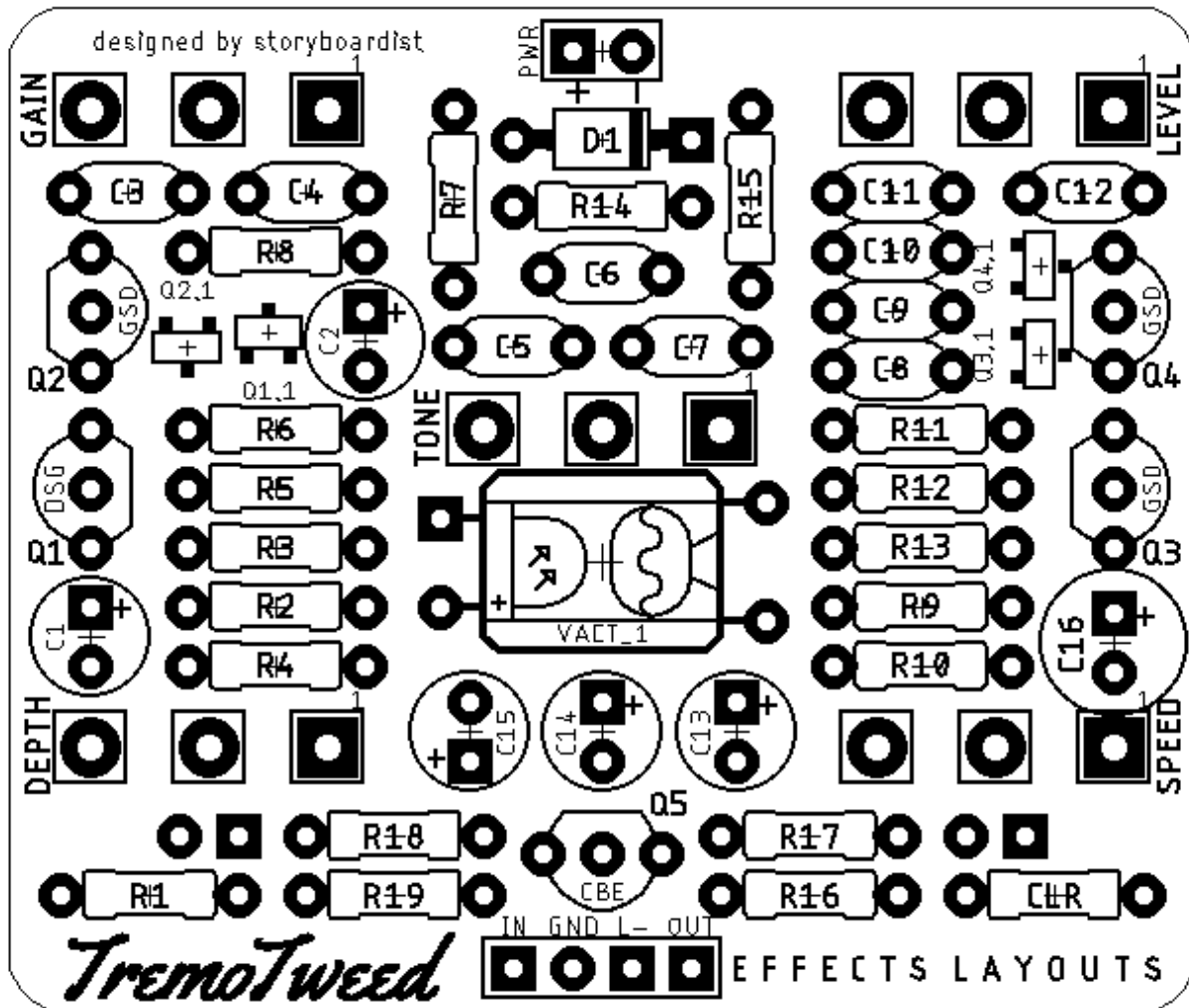
The vactrol can easily be replaced with an LDR and 5mm LED in some shrink tube. In prototyping I used a 5mm yellow LED with a cheap Tayda LDR and it worked perfectly. Whatever LED you use for your vactrol, use the same kind (size and color) for the rate indicator, LED1.

### SHOPPING LIST

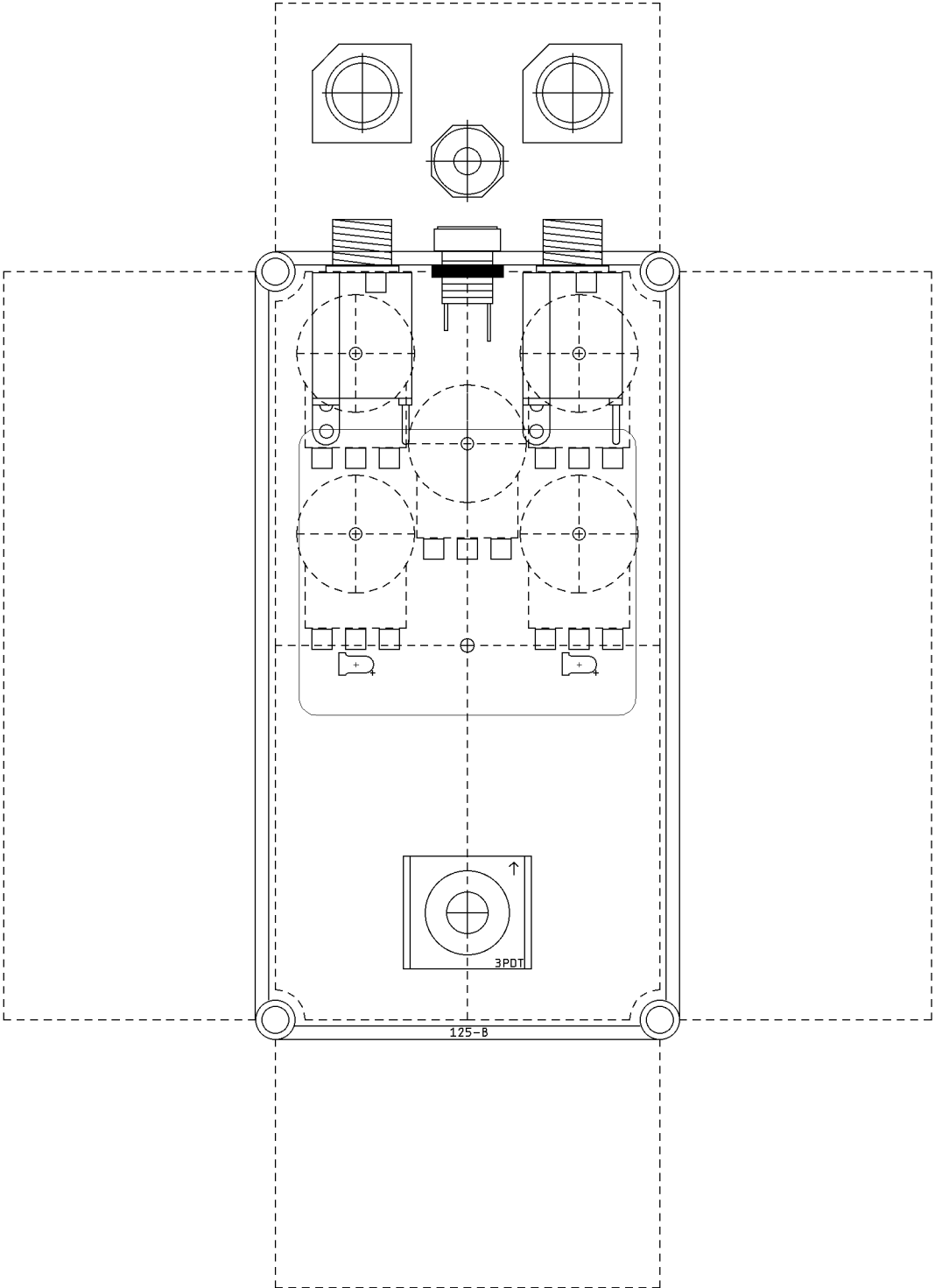
Value	Type (suggested)	Quantity
100Ω	¼ watt metal or carbon film	1
3.3k	¼ watt metal or carbon film	2
4.7k	¼ watt metal or carbon film	1
10k	¼ watt metal or carbon film	4
47k	¼ watt metal or carbon film	2
62k	¼ watt metal or carbon film	1
1M	¼ watt metal or carbon film	8
2.2M	¼ watt metal or carbon film	1
47p	Ceramic	1
1n	Film	3
4.7n	Film	1
22n	Film	2
100n	Film	3
1μ	Electrolytic (25v+)	3
2.2μ	Electrolytic (25v+)	1
4.7μ	Electrolytic (25v+)	1
100μ	Electrolytic	1
1N5817	Schottky rectifier diode	1
2N5088	BJT	1

2N5457	JFET	4
LED	3 or 5mm	2
Vactrol	VTL5C2 or roll your own (see notes)	1
A500k	16mm right angle PC mount	1
A1M	16mm right angle PC mount	1
B1M	16mm right angle PC mount	1
C50k	16mm right angle PC mount	2

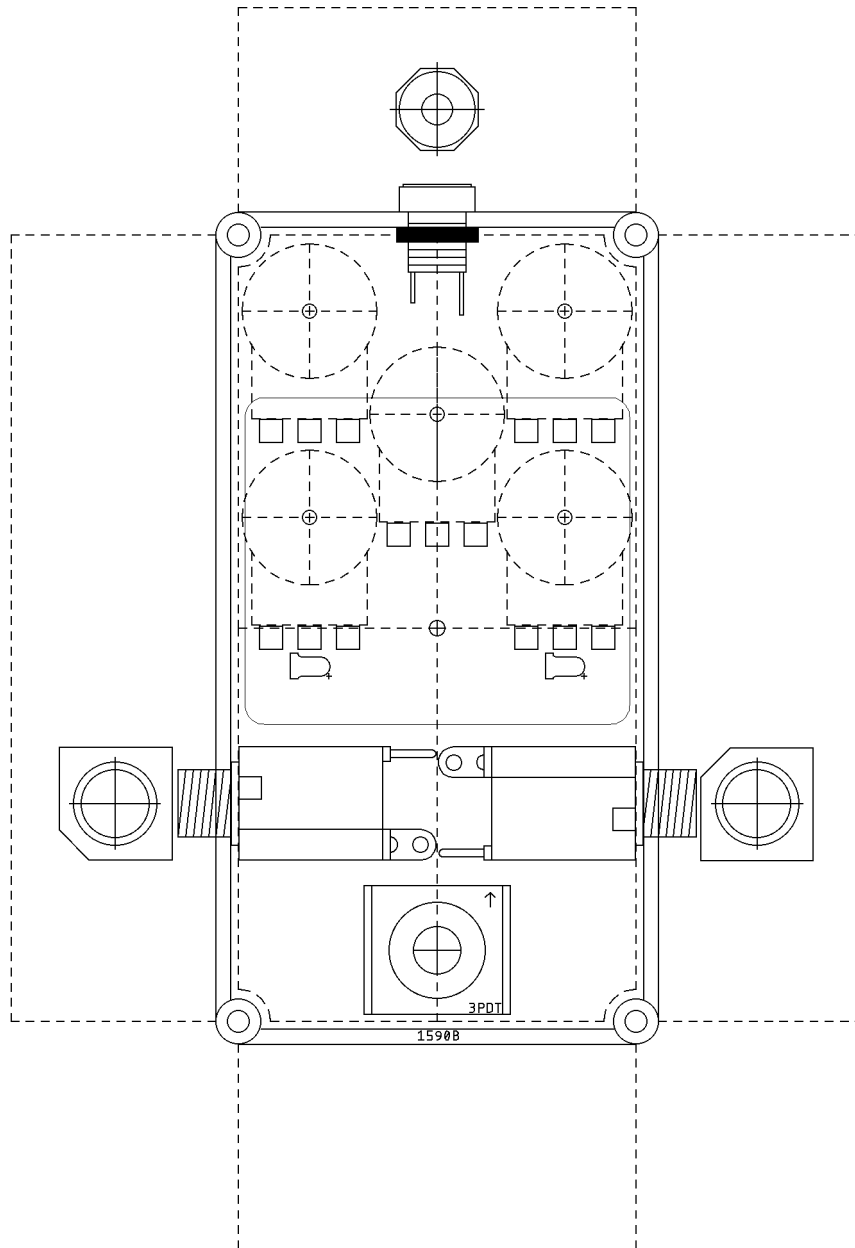
LAYOUT



**DRILL TEMPLATE (125B)**



# DRILL TEMPLATE (1590B)



EFFECTS LAYOUTS © 2022  
For DIY and small commercial applications.  
Not for non-peer to peer resale.