

BOM

Resistors

R1	1M
R2	100k
R3	47k
R4	15k
R5	33k
R6	33k
R7	1M
R8	470k
R9	10k
R10	1.5k
R11	680Ω
R12	1.5M
R13	150k
R14	470Ω
R15	1M
R16	47k
R17	100k
R18	68k
R19	470k
R20	220k
R21	100k
R22	220k
CLR	4.7k

Capacitors

C1	100n
C2	47n
C3	220n
C4	47n
C5	1μ

C6	10n
C7	22n
C8	22n
C9	5.6n
C10	680p
C11	680p
C12	100μ
C13	100n

Semiconductors

D1	2N5088
D2	2N5088
D3	1N5817
LED	3 or 5mm LED
Q1	2N5088
Q2	2N5088
Q3	2N5088
Q4	2N5088

Electromechanical

Balance	B50k dual-gang
Fuzz	SPDT on/on
Sustain	B100k
Volume	A100k

Notes

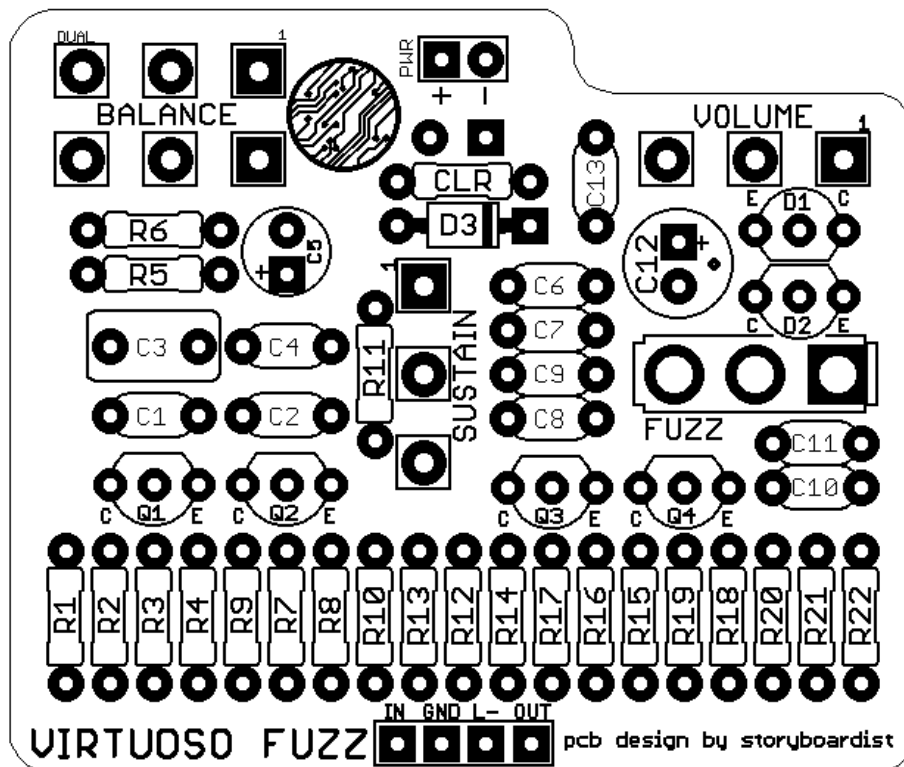
D1-2 utilize transistors for clipping. If you'd rather use normal diodes, connect the anode to the base pad and the cathode to either the collector or emitter pad.

SHOPPING LIST

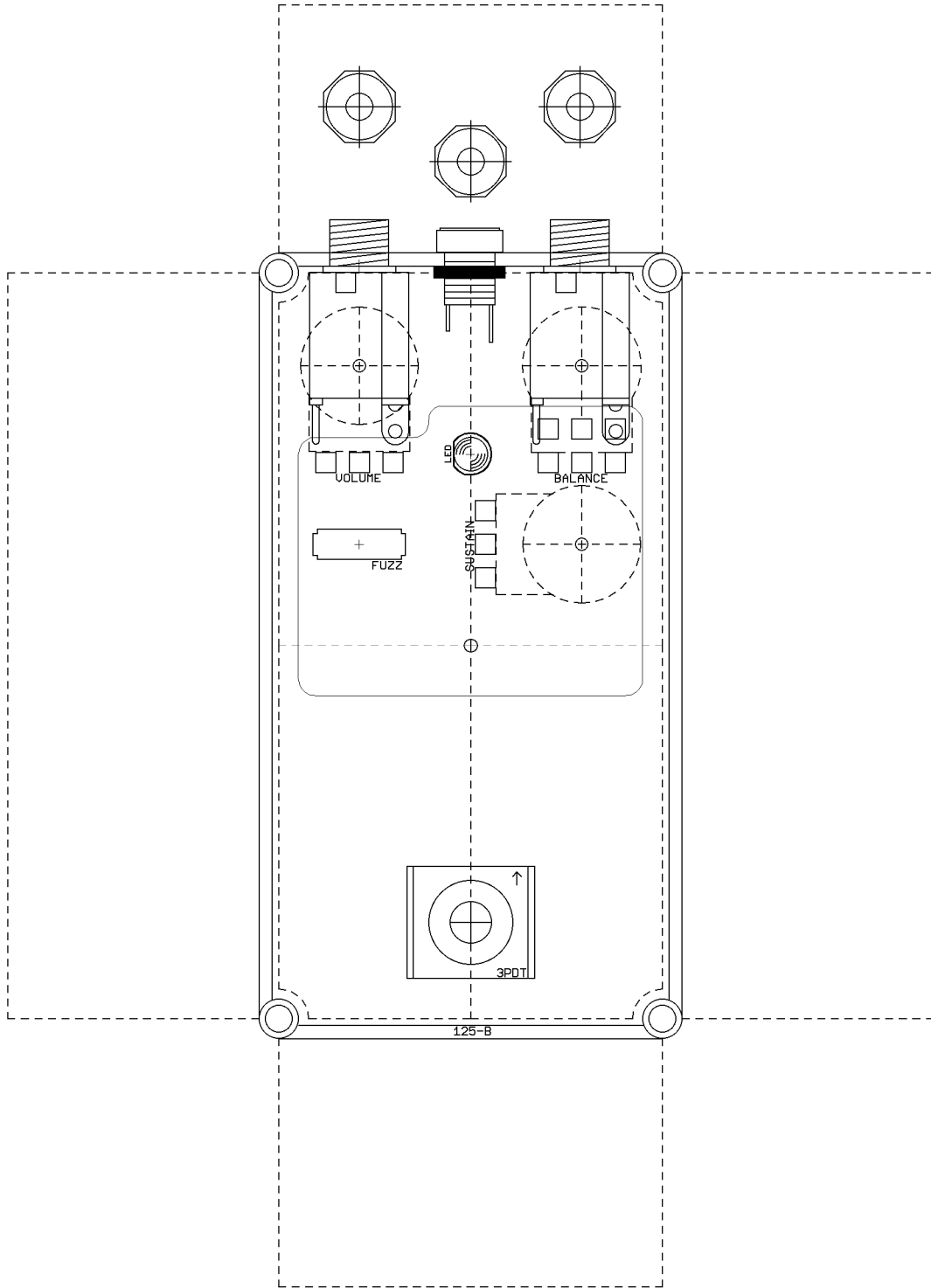
Value	Type (suggested)	Quantity
470Ω	¼ watt metal or carbon film	1
680Ω	¼ watt metal or carbon film	1
1.5k	¼ watt metal or carbon film	1
4.7k	¼ watt metal or carbon film	1
10k	¼ watt metal or carbon film	1
15k	¼ watt metal or carbon film	1
33k	¼ watt metal or carbon film	2
47k	¼ watt metal or carbon film	2
68k	¼ watt metal or carbon film	1

100k	¼ watt metal or carbon film	3
150k	¼ watt metal or carbon film	1
220k	¼ watt metal or carbon film	2
470k	¼ watt metal or carbon film	2
1M	¼ watt metal or carbon film	2
1.5M	¼ watt metal or carbon film	1
680p	Ceramic	2
5.6n	Film	1
10n	Film	1
22n	Film	2
47n	Film	2
100n	Film	2
220n	Film	1
1µ	Electrolytic (25v+)	1
100µ	Electrolytic (25v+)	1
1N5817	Schottky rectifier diode	1
2N5088	BJT	6
LED	3 or 5mm	1
A100k	16mm right angle PC mount	1
B50k	Dual-gang 16mm right angle PC mount	1
B100k	16mm right angle PC mount	1
SPDT	On/on toggle	1

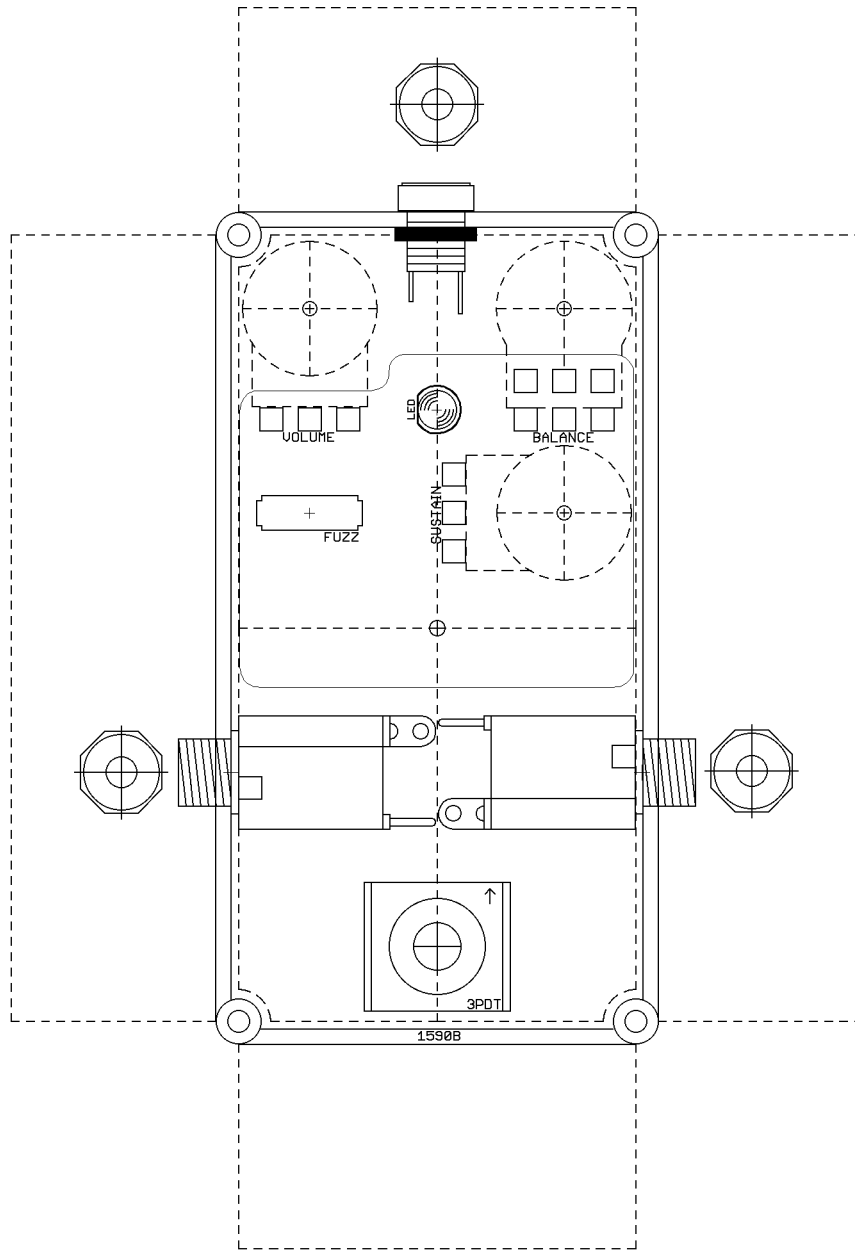
LAYOUT



DRILL TEMPLATE (125B)



DRILL TEMPLATE (1590B)



EFFECTS LAYOUTS © 2020
For DIY and small commercial applications.
Not for non-peer to peer resale.