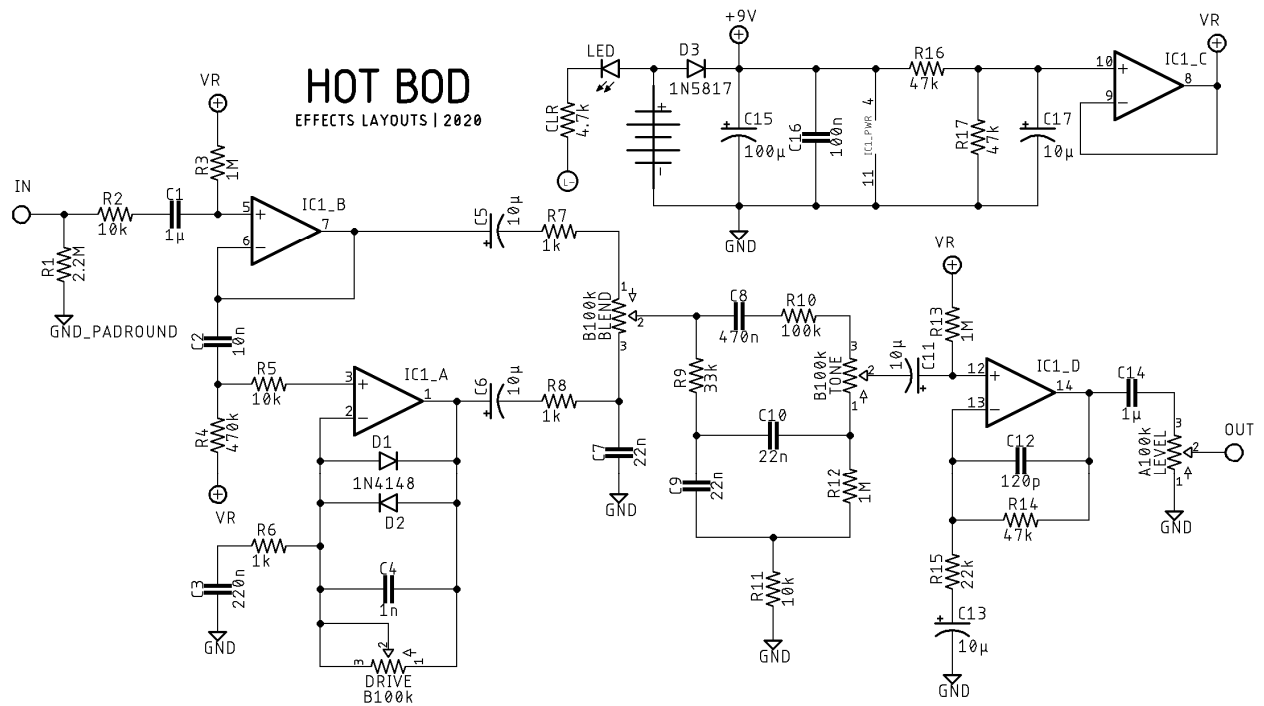


HOT BOD

DESCRIPTION

The HOT BOD is my take on the DOD FX91 Bass Overdrive. The circuit offers symmetrical soft clipping, a clean blend, and an op-amp based input buffer in place of the transistor-based buffer of the original. It's a pretty straight forward design and sounds very good on bass (as designed), but also sound great with guitar as well.

SCHEMATIC



BOM

Resistors

R1	2.2M
R2	10k
R3	1M
R4	470k
R5	10k
R6	1k
R7	1k
R8	1k
R9	33k
R10	100k
R11	10k
R12	1M
R13	1M
R14	47k
R15	22k
R16	47k
R17	47k
CLR	4.7k

Capacitors

C1	1 μ
C2	10n
C3	220n
C4	1n
C5	10 μ

C6	10 μ
C7	22n
C8	470n
C9	22n
C10	22n
C11	10 μ
C12	120p
C13	10 μ
C14	1 μ
C15	100 μ
C16	100n
C17	10 μ

Semiconductors

D1	1N4148
D2	1N4148
D3	1N5817
IC1	TL074
LED	3 or 5mm

Electromechanical

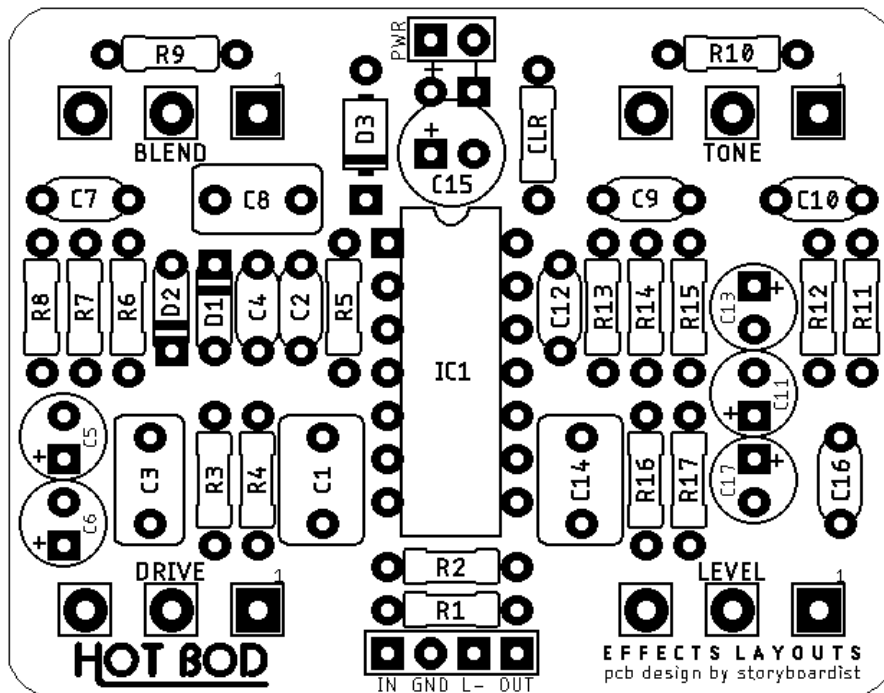
Blend	B100k
Drive	B100k
Level	A100k
Tone	B100k

SHOPPING LIST

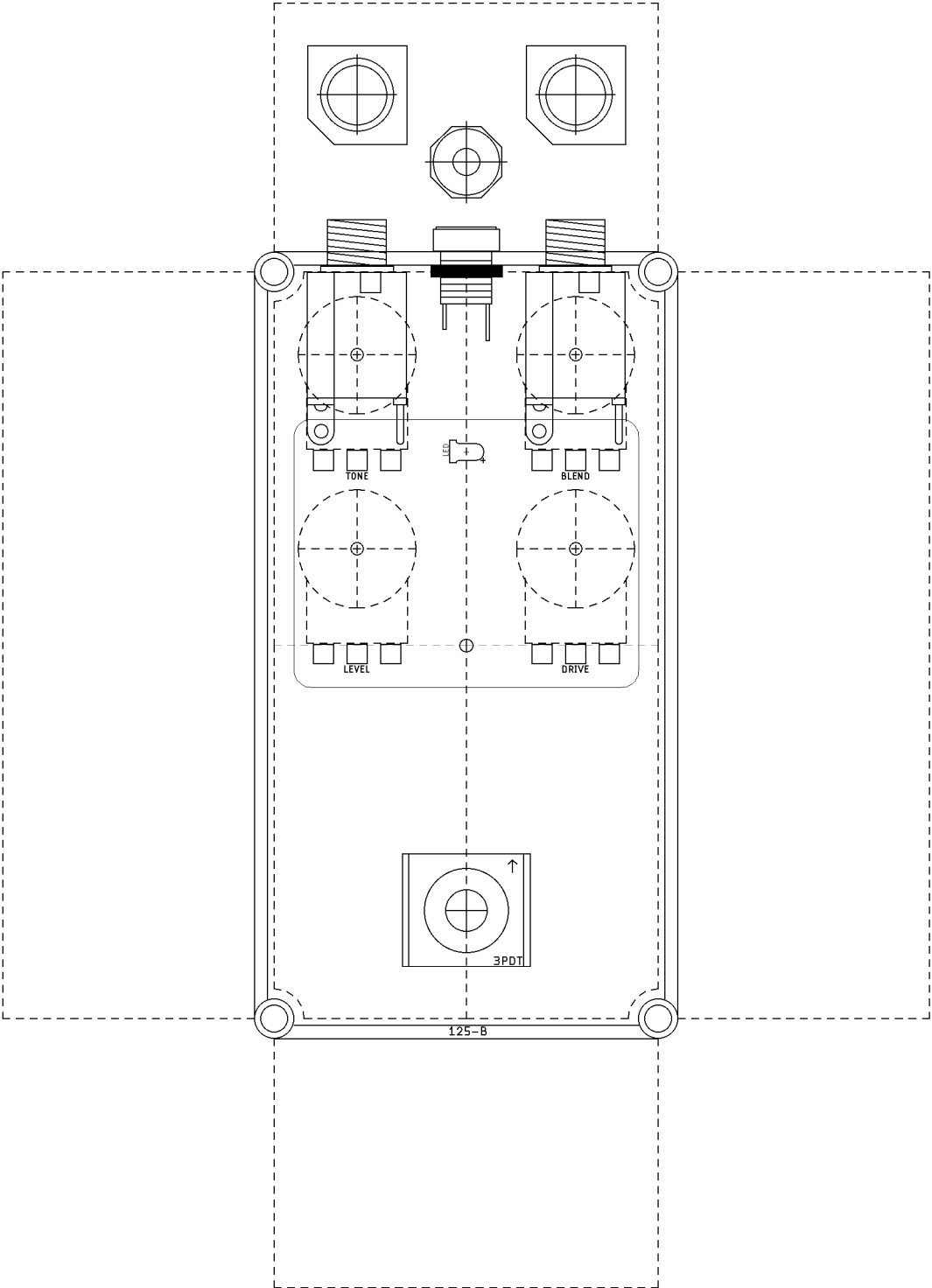
Value	Type (suggested)	Quantity
1k	¼ watt metal or carbon film	3
4.7k	¼ watt metal or carbon film	1
10k	¼ watt metal or carbon film	3
22k	¼ watt metal or carbon film	1
33k	¼ watt metal or carbon film	1
47k	¼ watt metal or carbon film	3
100k	¼ watt metal or carbon film	1
470k	¼ watt metal or carbon film	1
1M	¼ watt metal or carbon film	3
2.2M	¼ watt metal or carbon film	1
120p	Ceramic	1
1n	Film	1
10n	Film	1
22n	Film	3

100n	Ceramic	1
220n	Film	1
470n	Film	1
1μ	Film	2
10μ	Electrolytic	5
100μ	Electrolytic	1
1N4148	Silicon switching diode	2
1N5817	Schotky rectifier diode	1
LED	3 or 5mm	1
TL074	Quad op amp	1
A100k	16mm right angle PC mount	1
B100k	16mm right angle PC mount	3

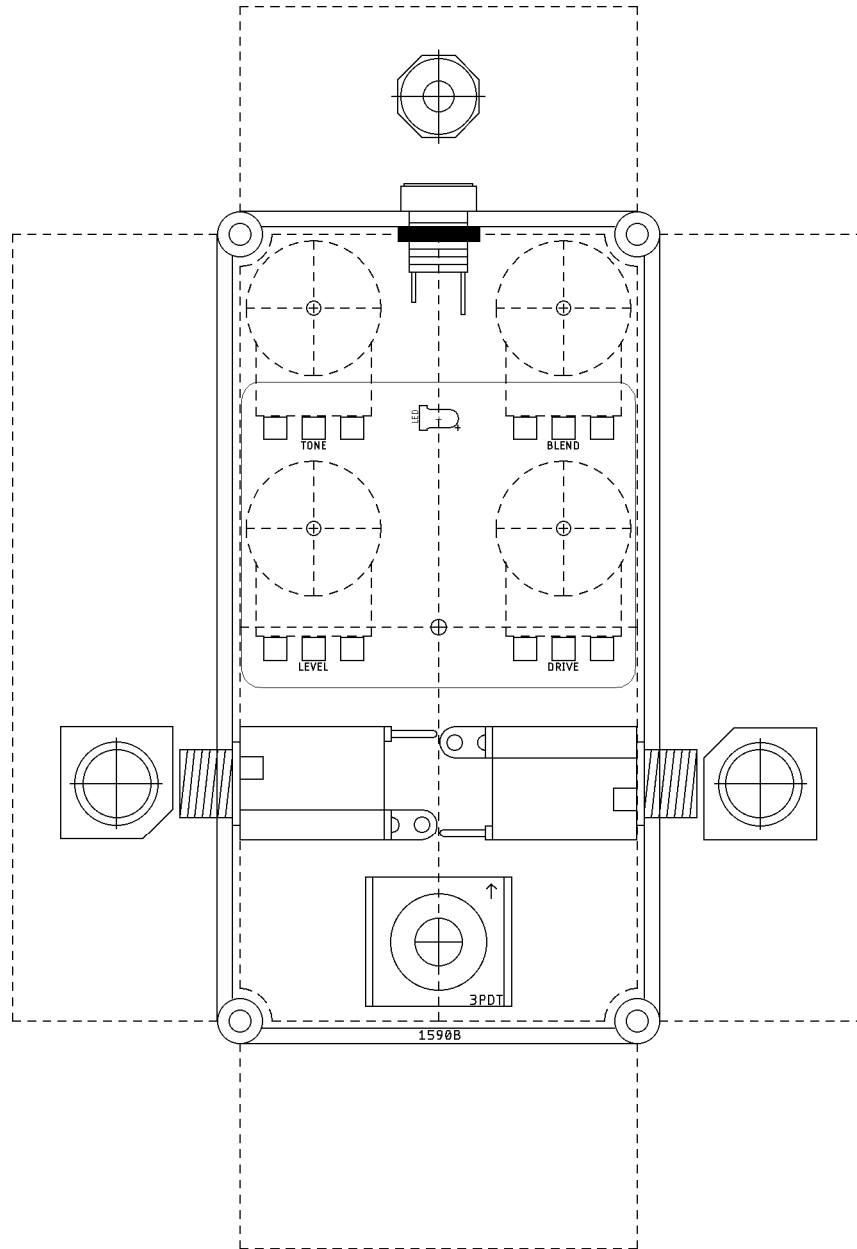
LAYOUT



DRILL TEMPLATE (125B)



DRILL TEMPLATE (1590B)



EFFECTS LAYOUTS © 2020
For DIY and small commercial applications.
Not for non-peer to peer resale.