

# TEST RIG MKIII

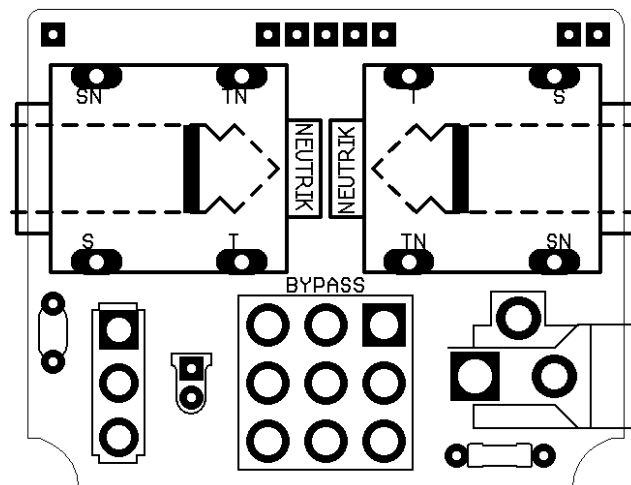
## DESCRIPTION

The TEST RIG MKIII is the 3<sup>rd</sup> iteration of the Test Rig I first published on the blog for etching. This version was designed specifically to fit in a 1590B with a footswitch. Solder leads with alligator clips to the pads and then attach other builds appropriately to other builds to test their functionality before boxing. There is a switchable audio probe built in for simple debugging should the need arise. It's designed to use Neutrik NMJ4HCD2 jacks and a Kobiconn board mounted DC jack. There are also pads to test on/off LED functionality if that's included in the board you're testing. It should prove to be a handy utility to have on your bench.

## SHOPPING LIST

Part	Type (suggested)	Quantity
4.7k	¼ watt metal or carbon film	1
100n	Film	1
LED	3 or 5mm	1
Enclosed jack	Neutrik NMJ4HCD2	2
DC jack	Kobiconn	1
SPDT	On/on toggle	1
Alligator clips	<a href="#">I used these</a>	

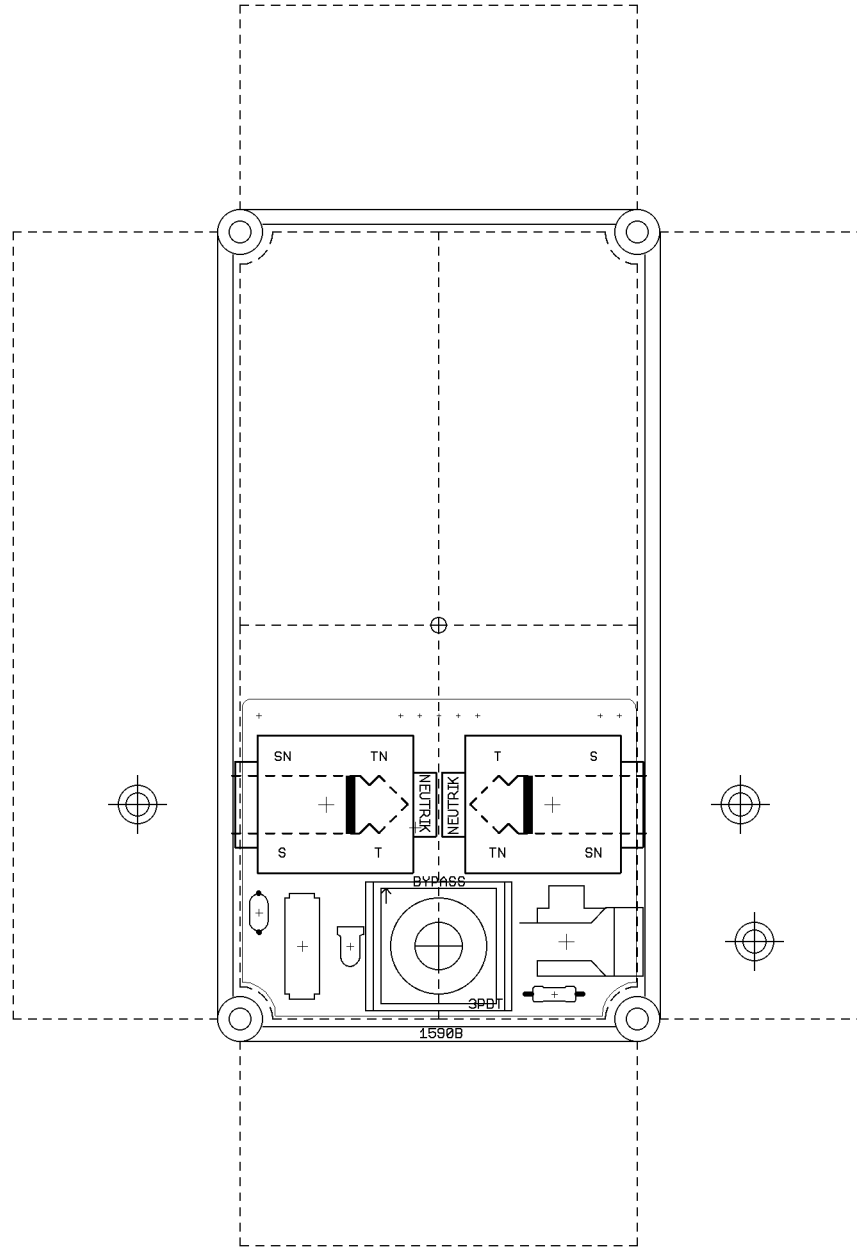
## LAYOUT



## NOTES

I used a jumper wire from a breadboarding kit for the probe wire, but a 8-12 inch length of solid core wire will work as well. If mounting this in an enclosure, you will want to drill a hole (probably in the top) for the clips and probe cables to come out. I leave this location up to you. The side drills in the drill template blow may need to be adjusted based on the height of the 3PDT switch you use.

# DRILL TEMPLATE (1590B)



EFFECTS LAYOUTS © 2020  
For DIY and small commercial applications.  
Not for non-peer to peer resale.