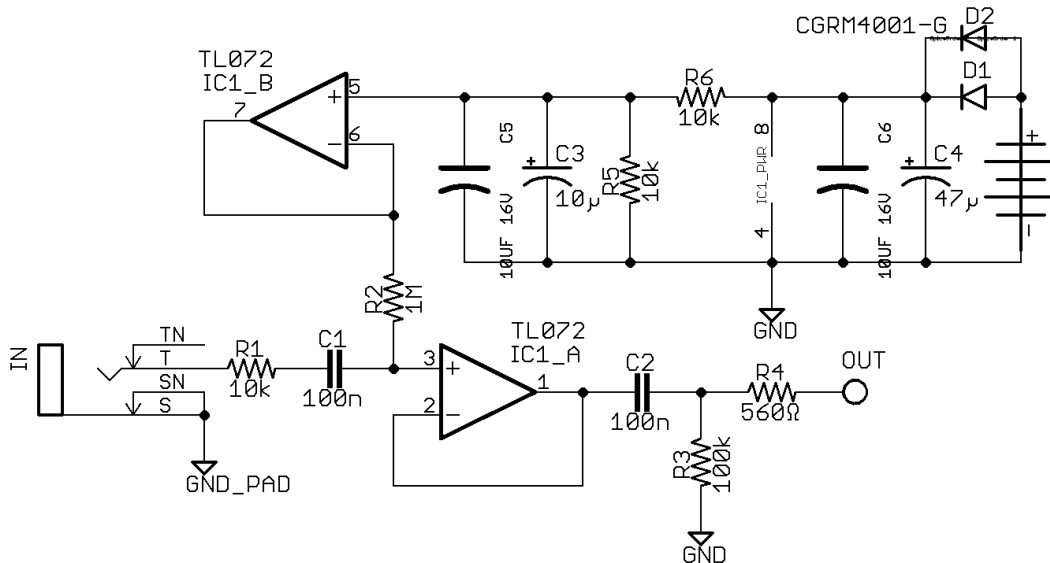


# MICRO BUFFER

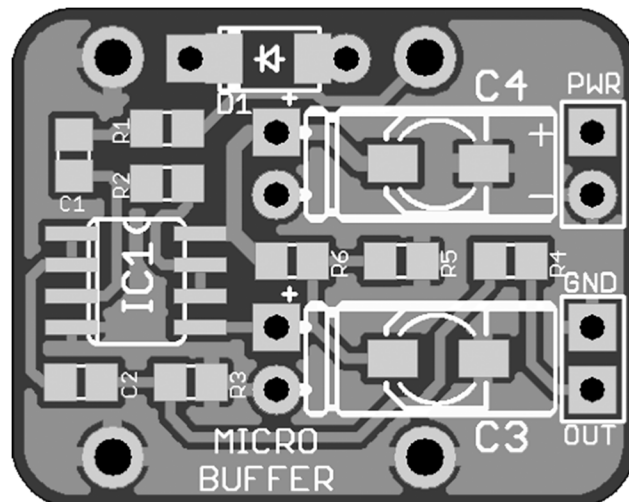
## DESCRIPTION

The MICRO BUFFER came about because I wanted a small, unintimidating project to try my hand at a surface mount device (SMD) build. For convenience and because I wanted something solid for the board to mount to, I used a mono Neutrik NMJ4HCD2 jack for the input jack that is board mounted. This allows not only for easy mounting, but also easy additions to other pedals that might benefit from having an input buffer. There are through holes for the polarity protection diode and for the electrolytic caps. It's easy enough to build with a soldering iron or a hot air station.

## SCHEMATIC



## LAYOUT



## BOM

### Resistors

R1	10k
R2	1M
R3	100k
R4	560Ω
R5	10k
R6	10k

### Capacitors

C1	100n
C2	100n
C3	10μ
C4	47μ

### Semiconductors

D1	RB168MM150TFTR or 1N5817
D2	TL072

### Electromechanical

IN	NMJ4HCD2
----	----------

## SHOPPING LIST

Part	Type (suggested)	Quantity
560Ω	0805 smd resistor	1
10k	0805 smd resistor	3
100k	0805 smd resistor	1
1M	0805 smd resistor	1
100n	0805 smd capacitor	2
10μ	3.8mm smd electrolytic capacitor (or through-hole)	1
47μ	3.8mm smd electrolytic capacitor (or through-hole)	1
RB168/1N5817	Schottky rectifier diode	1
TL072	Dual op amp smd	1
NMJ4HCD2	Switched closed ¼" jack	1

