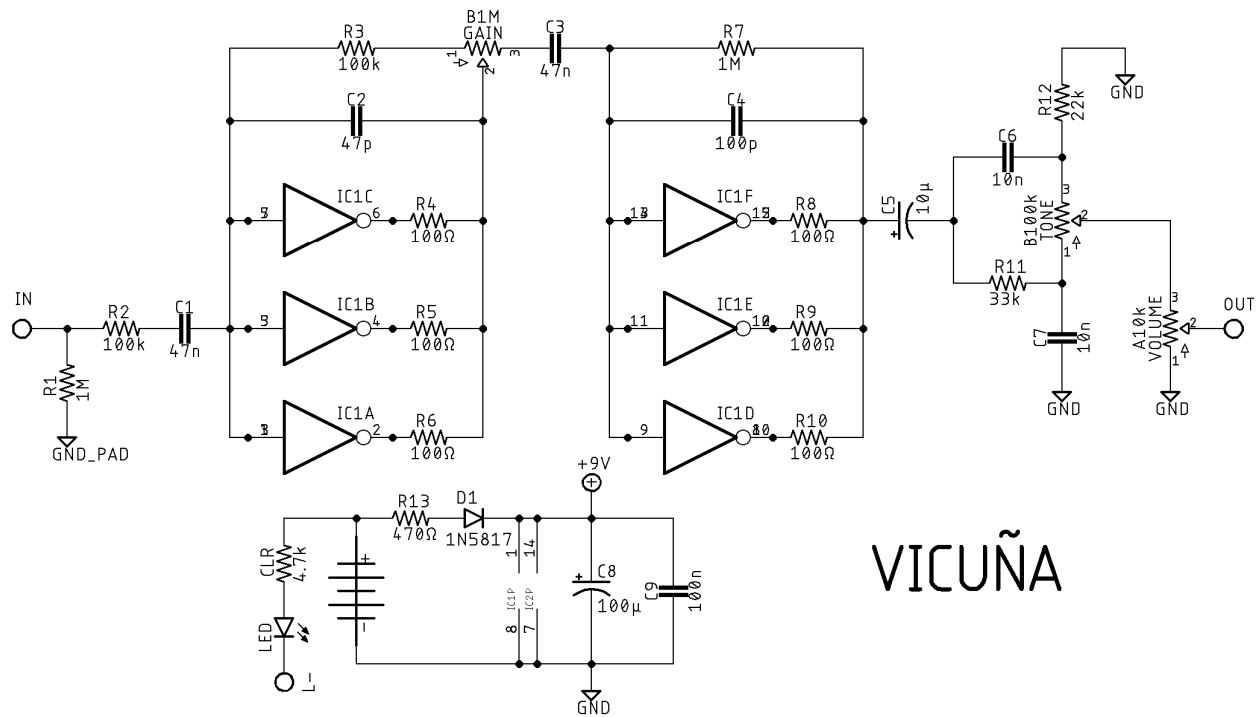


VICUÑA

DESCRIPTION

The Vicuña is a bit of a reimagining of the Way Huge Red Llama/Craig Anderton Tube Sound Fuzz. Instead of just using 2 of the hex inverters of the CD4049, each stage stacks 3 of the hex inverters in parallel. Added to the output is a Big Muff Tone stack with a flat frequency response. And for good measure, there are extra pads so that either the CD4049UBE or the CD4069UBE can be used.

SCHEMATIC

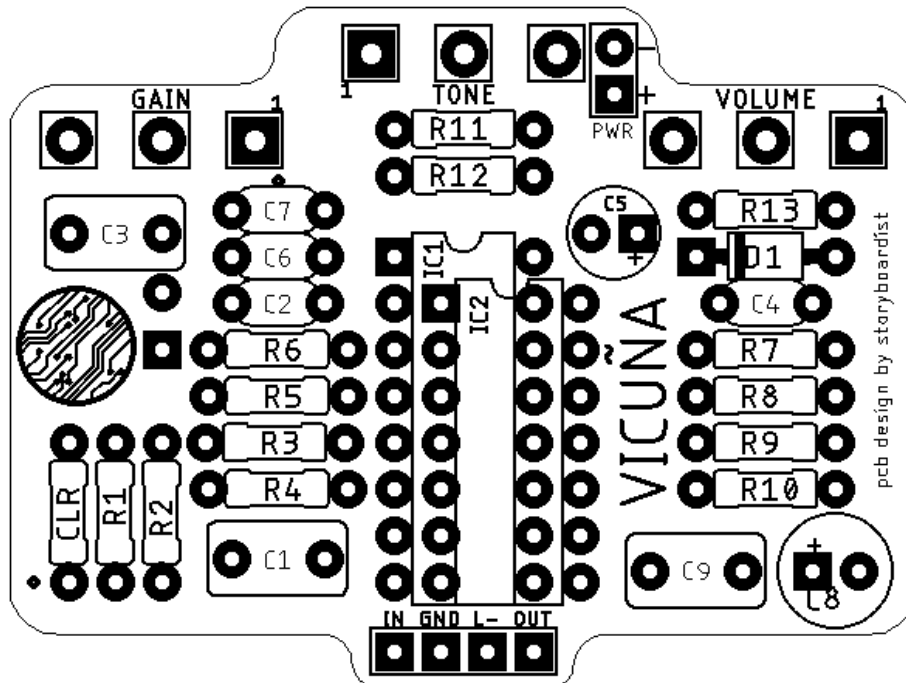


VICUÑA

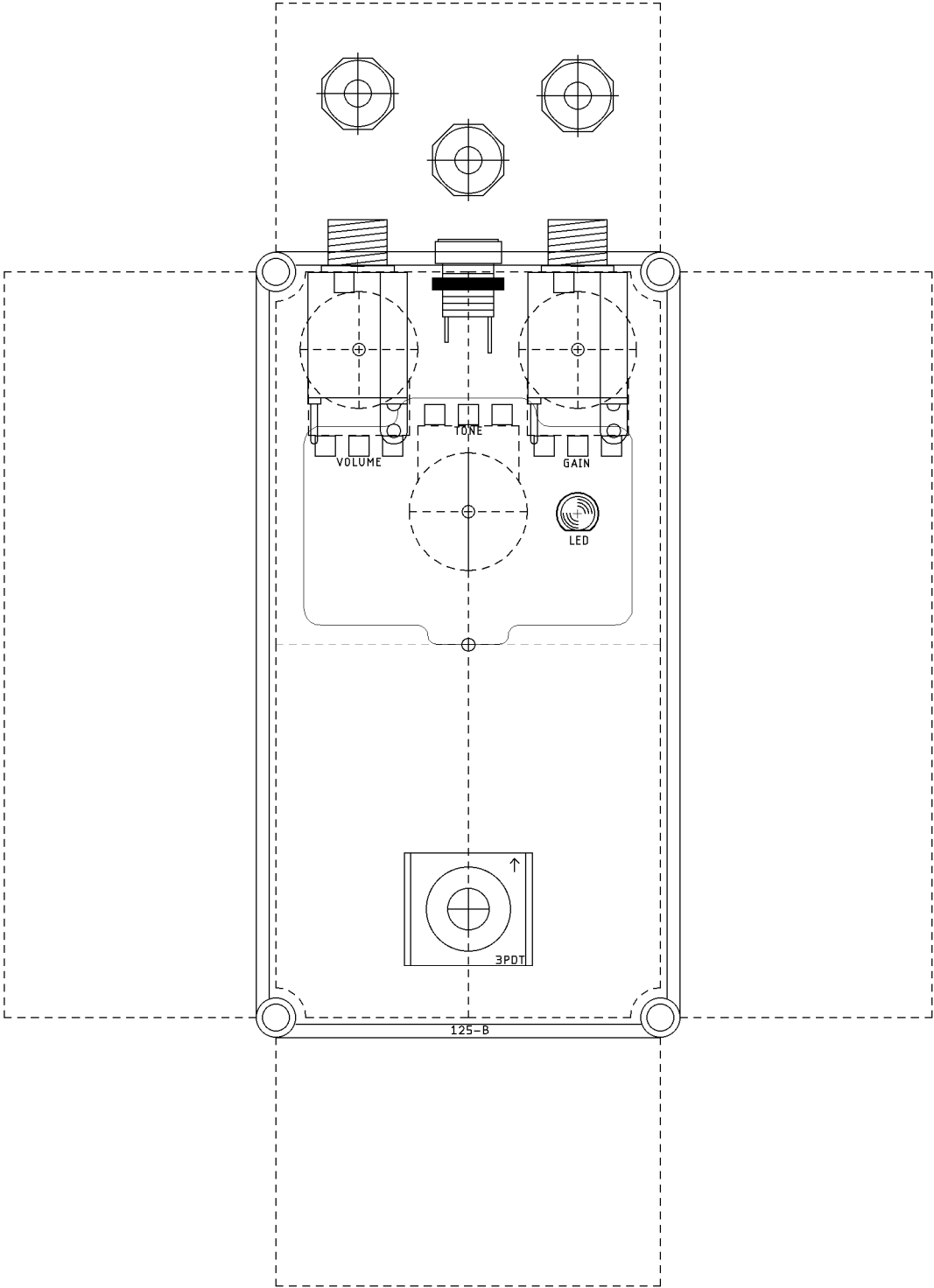
SHOPPING LIST

Part	Type (suggested)	Quantity
100Ω	¼ watt metal or carbon film	6
470Ω	¼ watt metal or carbon film	1
4.7k	¼ watt metal or carbon film	1
22k	¼ watt metal or carbon film	1
33k	¼ watt metal or carbon film	1
100k	¼ watt metal or carbon film	2
1M	¼ watt metal or carbon film	2
47p	Ceramic (63v or higher)	1
100p	Ceramic (63v or higher)	1
10n	Film (63v or higher)	2
47n	Film (63v or higher)	2
100n	Film (63v or higher)	1
10μ	Electrolytic (35v or higher)	1
100μ	Electrolytic (35v or higher)	1
1N5817		1
LED	3 or 5mm LED	1
CD4049UBE or CD4069	Hex Inverter (unbuffered)	1
A10k	16mm right angle PC mount	1
B1M	16mm right angle PC mount	1
B100k	16mm right angle PC mount	1

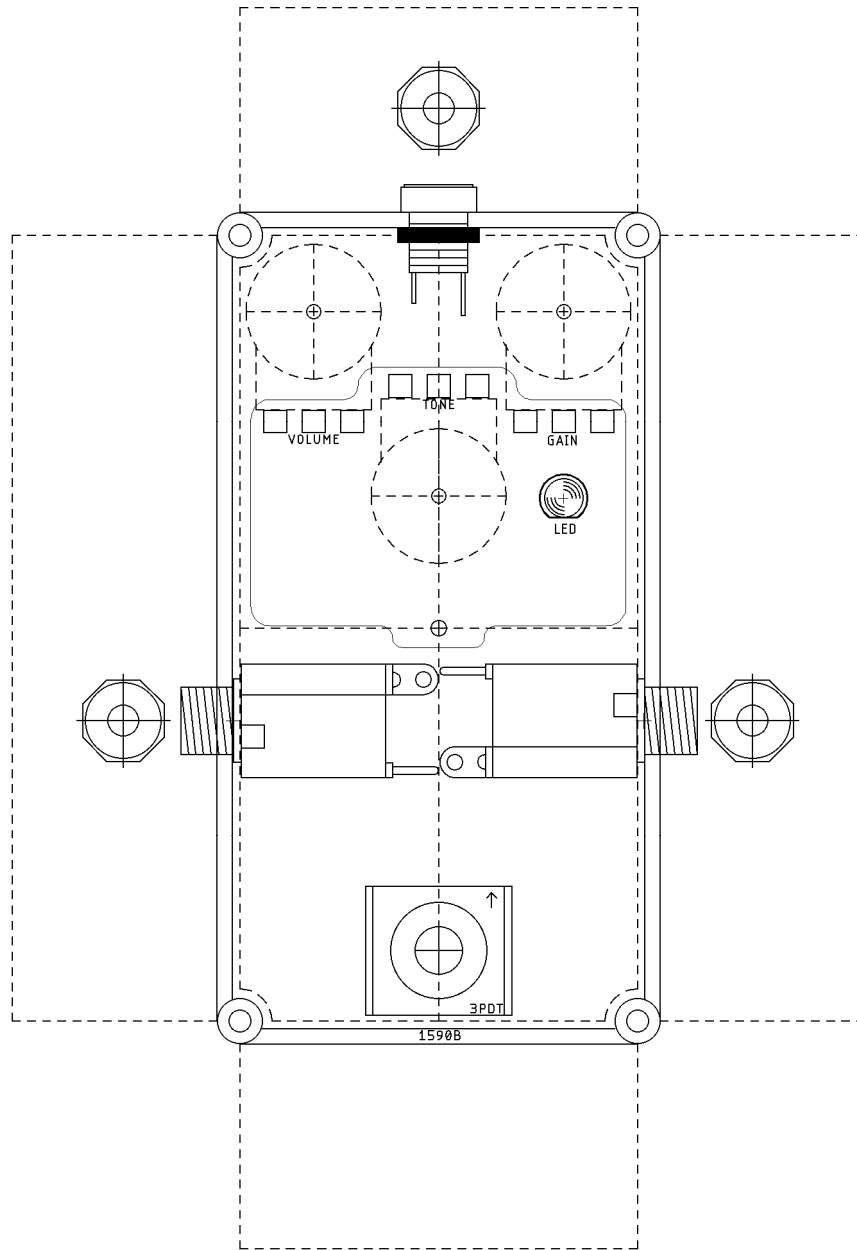
LAYOUT



DRILL TEMPLATE (125B)



DRILL TEMPLATE (1590B)



EFFECTS LAYOUTS © 2019
For DIY and small commercial applications.
Not for non-peer to peer resale.