

BOM

Resistors

R1	1M
R2	1M
R3	22k
R4	3.9k
R5	22k
R6	10k
R7	10k
R8	10k
R9	100k
R10	4.7k
R11	1k
R12	5.6k
R13	100k
R14	22k
R15	22k
R16	3.9k
R17	10k
R18	10k
CLR	4.7k

Capacitors

C1	10n
C2	100n
C3	1n
C4	10n
C5	10n
C6	100n
C7	100p
C8	10n
C9	10n
C10	100n
C11	100n

C12	100μ
C13	10n
C14	47μ

Semiconductors

D1	3mm red LED
D2	1N4001
D3	1N4001
D4	1N4001 or 1N5817
IC1	NE5532
LED	3 or 5mm LED
Q1	2N5457
Q2	2N7000
Q3	2N5457

Electromechanical

Clip	DPDT on/on
Drive	B100k
Level	A100k
Tone	W20k

NOTES

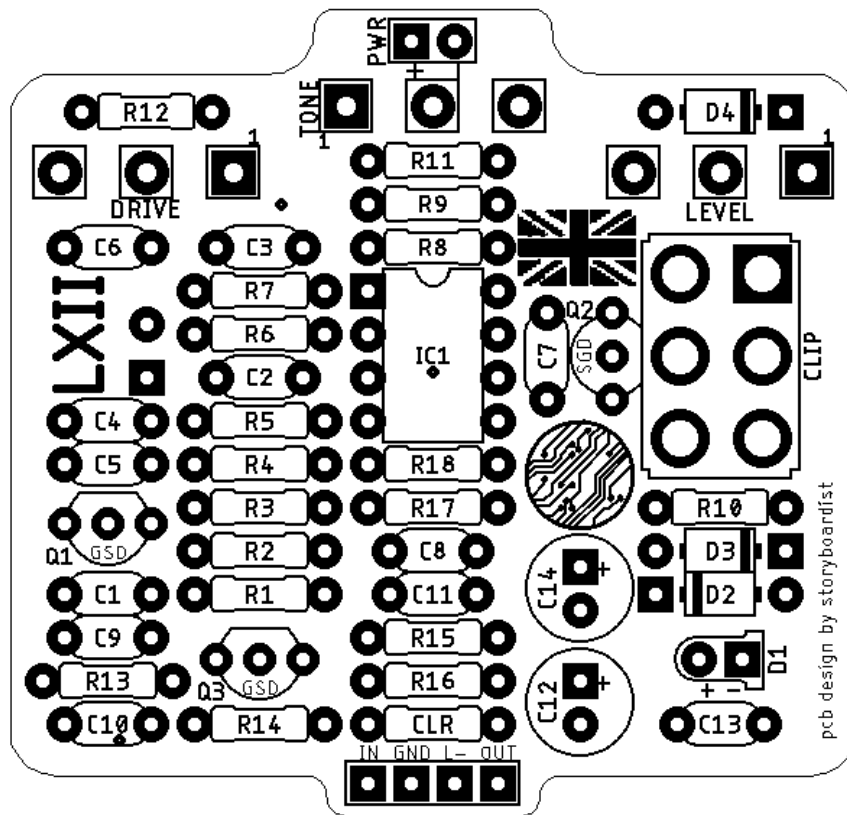
The Clip switch allows you select between '62 and '62x specs. I personally didn't hear much difference, so you may want to socket and experiment with diodes or jump the switch pads to the option you prefer. There are SMD pads on the back of the board for the JFETs (Q1, 3) if you can't find in-spec through-hole JFETs. A B20k pot can sub for the W20k Tone pot.

SHOPPING LIST

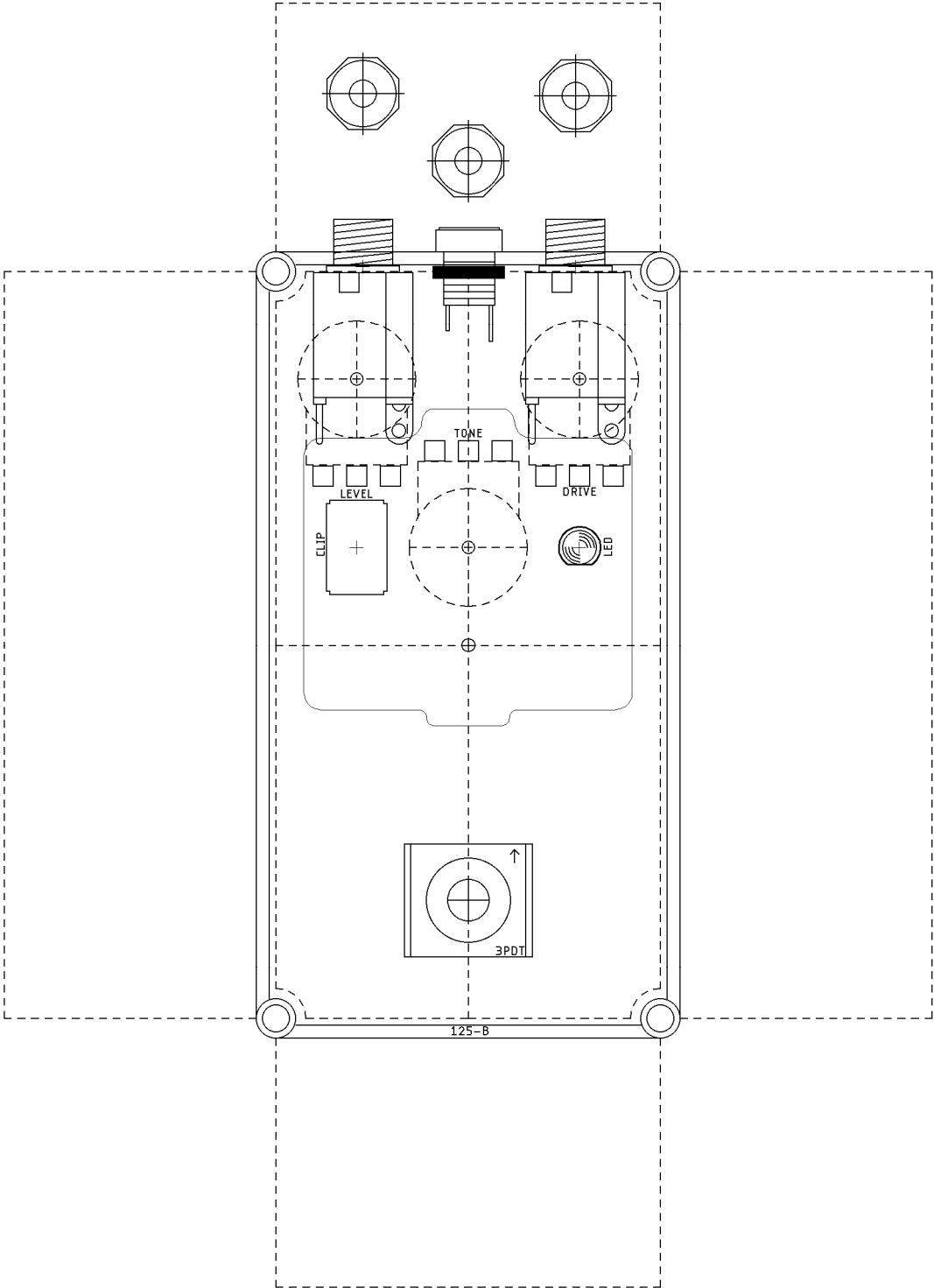
Value	Type (suggested)	Quantity
1k	¼ watt metal or carbon film	1
3.9k	¼ watt metal or carbon film	2
4.7k	¼ watt metal or carbon film	2
5.6k	¼ watt metal or carbon film	1
10k	¼ watt metal or carbon film	5
22k	¼ watt metal or carbon film	4
100k	¼ watt metal or carbon film	2
1M	¼ watt metal or carbon film	2

100p	Ceramic (63v or higher)	1
1n	Film (63v or higher)	1
10n	Film (63v or higher)	6
100n	Film (63v or higher)	4
47 μ	Electrolytic (35v or higher)	1
100 μ	Electrolytic (35v or higher)	1
1N4001		3
2N5457	N-channel JFET	2
2N7000	N-channel MOSFET	1
3mm red LED		1
3 or 5mm LED		1
NE5532	Dual opamp	1
A100k	16mm right angle PC mount	1
B100k	16mm right angle PC mount	1
DPDT	Toggle switch	1
W20k	16mm right angle PC mount	1

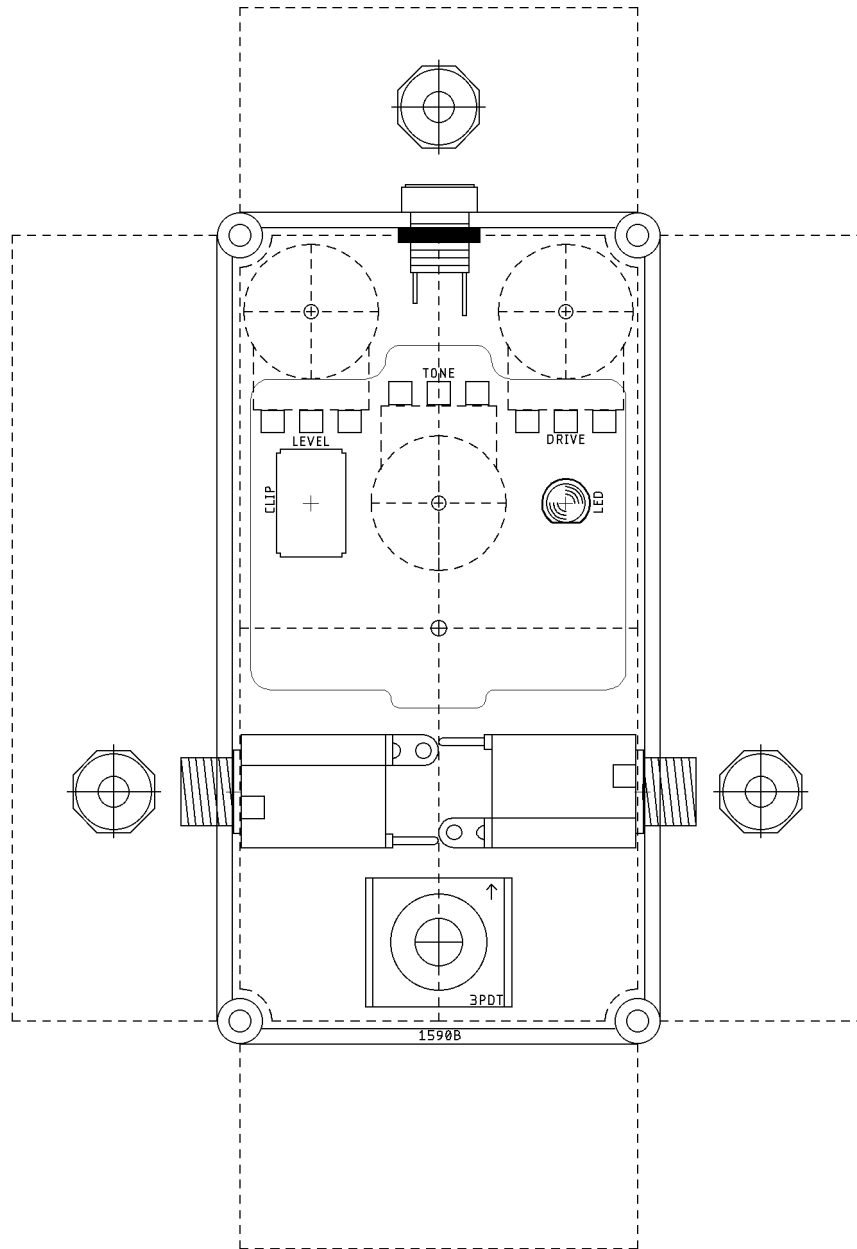
LAYOUT



DRILL TEMPLATE (125B)



DRILL TEMPLATE (1590B)



EFFECTS LAYOUTS © 2019
For DIY and small commercial applications.
Not for non-peer to peer resale.