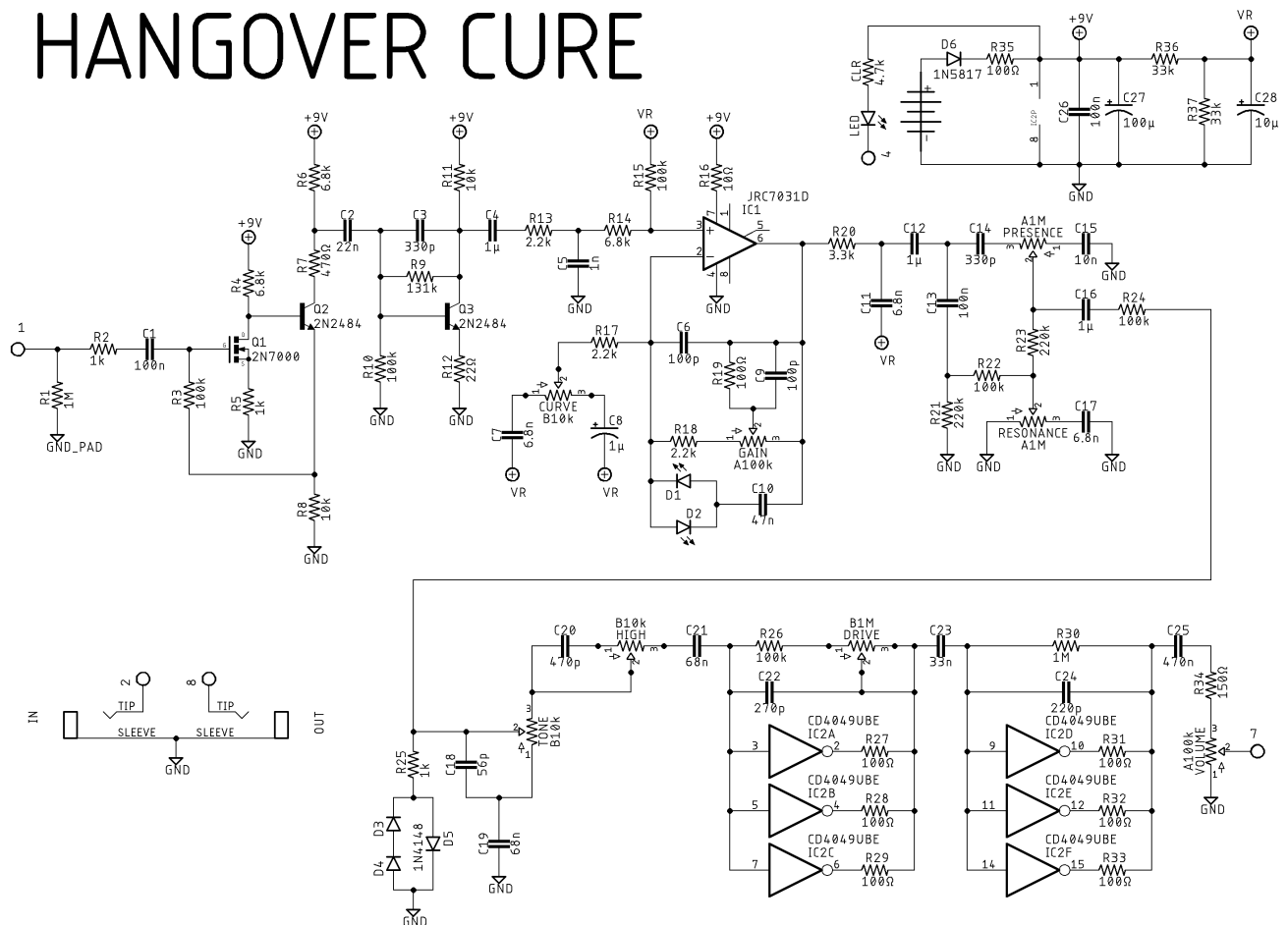


HANGOVER CURE

DESCRIPTION

This is a big, (some might say overly) complicated, not for the faint of heart, dirt box. And boy does it sound good. It's based on the Way Huge Fat Sandwich and will fit snugly in a 125B enclosure with top mounted jacks (I suggest using low profile jacks). The circuit itself is rather unique with several varying gain stages (there's even something in there that looks kinda like a Fuzz Face) into a Baxendall tone stack, and then essentially into a modified Red Llama. The original has 3 of the pots (Curve, High, and Drive) internally and you have the option to build it that way with trimmers, or you can use 9mm pots and have them externally.

SCHEMATIC



BOM

Resistors

R1	1M
R2	1k
R3	100k
R4	6.8k
R5	1k
R6	6.8k
R7	470Ω
R8	10k
R9	131k
R10	100k
R11	10k
R12	22Ω
R13	2.2k
R14	6.8k
R15	100k
R16	10Ω
R17	2.2k
R18	2.2k
R19	100Ω
R20	3.3k
R21	220k
R22	100k
R23	220k
R24	100k
R25	1k
R26	100k
R27	100Ω
R28	100Ω
R29	100Ω
R30	1M
R31	100Ω
R32	100Ω
R33	100Ω
R34	150Ω
R35	100Ω
R36	33k
R37	33k
CLR	4.7k

Capacitors

C1	100n
C2	22n
C3	330p

C4	1μ
C5	1n
C6	100p
C7	6.8n
C8	1μ
C9	100p
C10	47n
C11	6.8n
C12	1μ
C13	100n
C14	330p
C15	10n
C16	1μ
C17	6.8n
C18	56p
C19	68n
C20	470p
C21	68n
C22	270p
C23	33n
C24	220p
C25	470n
C26	100n
C27	100μ
C28	10μ

Semiconductors

D1	3mm red LED
D2	3mm red LED
D3	1N4148
D4	1N4148
D5	1N4148
D6	1N5817
IC1	NJU7031D
IC2	CD4049UBE
LED	3 or 5mm LED
Q1	2N7000
Q2	2N2484
Q3	2N2484

Electromechanical

Curve*	B10k
Drive*	B1M
Gain	A100k

High*	B10k
Presence	A1M
Resonance	A1M
Tone	B10k

Volume	A100k
--------	-------

Notes:

*Can be a trimmer or external 9mm pot

SHOPPING LIST

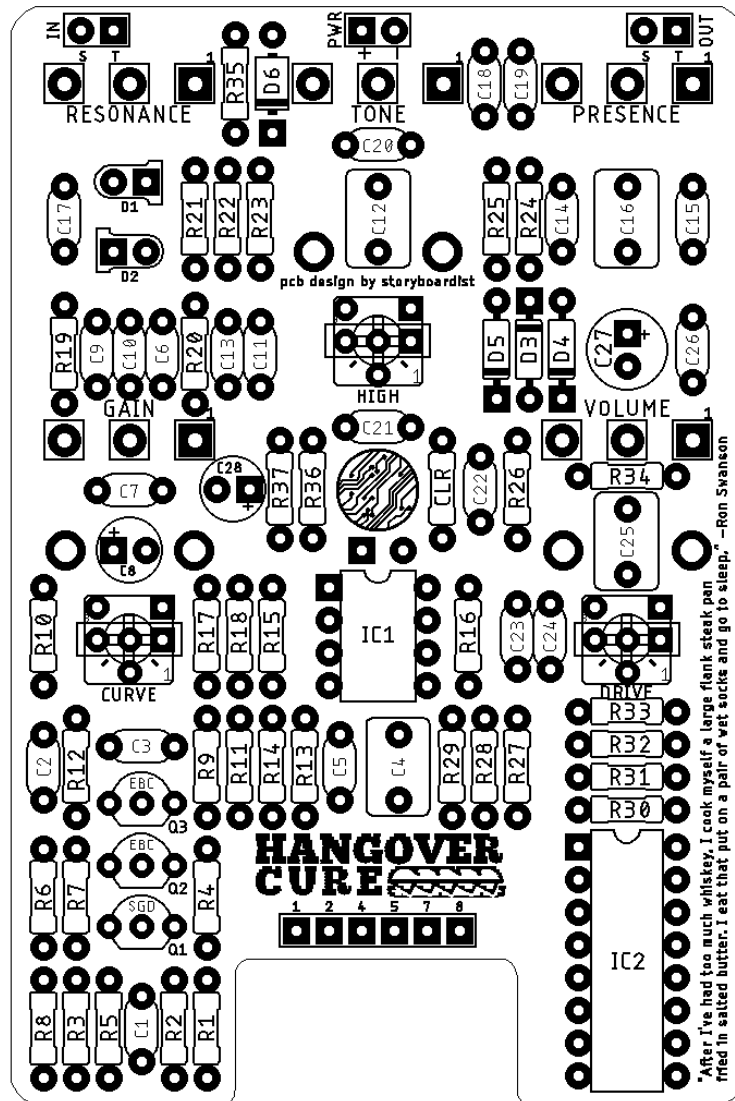
Value	Type (suggested)	Quantity
10Ω	¼ watt metal or carbon film	1
22Ω	¼ watt metal or carbon film	1
100Ω	¼ watt metal or carbon film	8
150Ω	¼ watt metal or carbon film	1
470Ω	¼ watt metal or carbon film	1
1k	¼ watt metal or carbon film	3
2.2k	¼ watt metal or carbon film	3
3.3k	¼ watt metal or carbon film	1
4.7k	¼ watt metal or carbon film	1
6.8k	¼ watt metal or carbon film	3
10k	¼ watt metal or carbon film	2
33k	¼ watt metal or carbon film	2
100k	¼ watt metal or carbon film	6
131k	¼ watt metal or carbon film	1
220k	¼ watt metal or carbon film	2
1M	¼ watt metal or carbon film	2
56p	Ceramic	1
100p	Ceramic	2
220p	Ceramic	1
270p	Ceramic	1
330p	Ceramic	2
470p	Ceramic	1
1n	Film	1
6.8n	Film	3
10n	Film	1
22n	Film	1
33n	Film	1
47n	Film	1
68n	Film	2
100n	Film	3
470n	Film	1
1μ	Film	4
10μ	Electrolytic (35v or higher)	1
100μ	Electrolytic (35v or higher)	1
1N4148	Silicon switching signal diode	3
1N5817	Schottky rectifier diode	1
2N2484	BJT	2
2N7000	MOSFET	1

3mm red LED		2
CD4049UBE	CMOS Hex inverter	1
LED	3-5mm LED	1
NJU7031D	Single CMOS opamp	1
10k*	Trim pot	2
1M	Trim pot	1
A100k	16mm right angle PC mount	2
A1M	16mm right angle PC mount	1
B10k**	9mm PC mount plastic shaft	2
B1M	9mm PC mount plastic shaft	1
B10k	16mm right angle PC mount	1

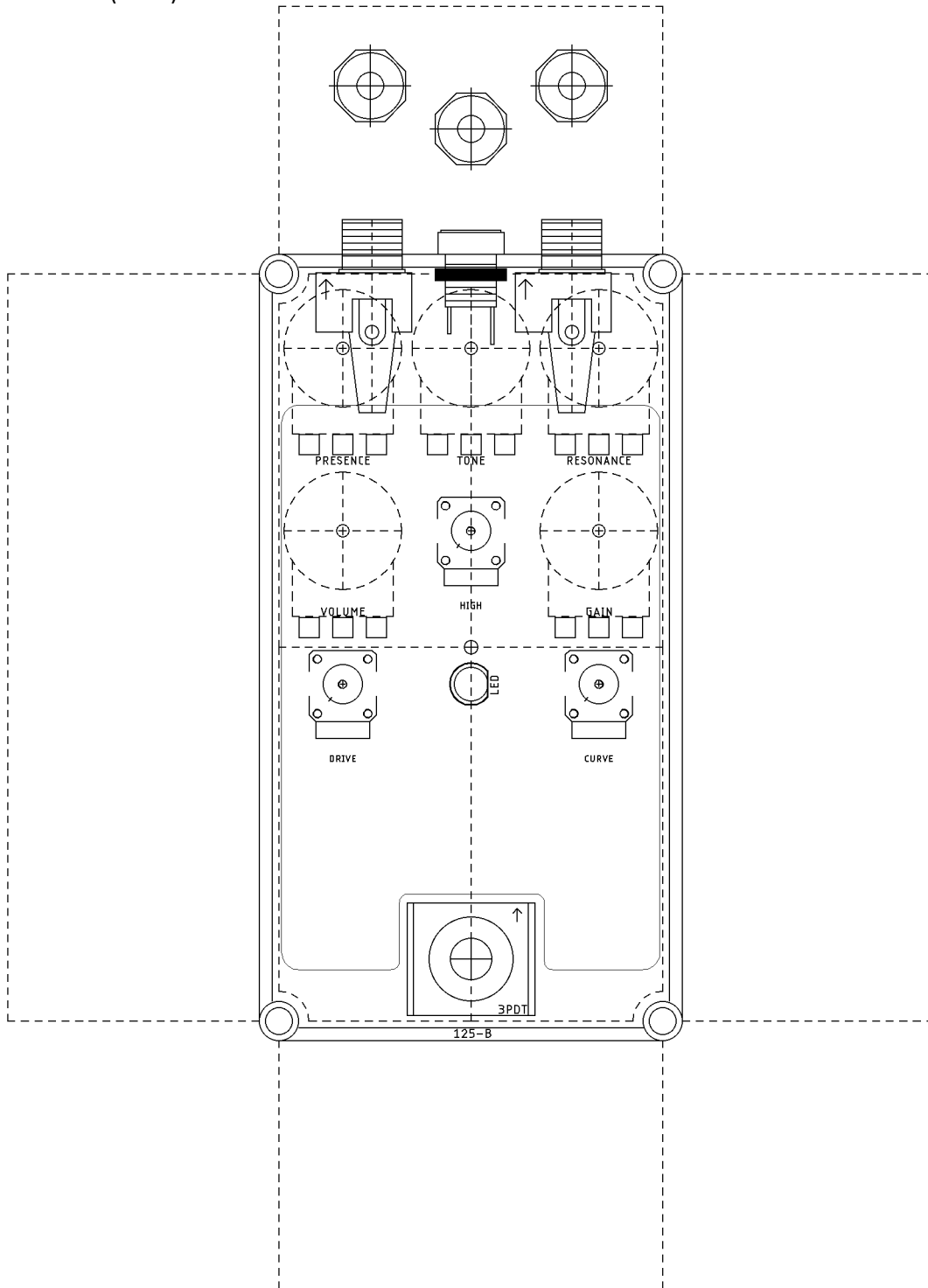
*Trimmer if mounting Curve, High, and Drive controls internally.

**9mm PC mount if mounting Curve, High, and Drive controls externally.

LAYOUT



DRILL TEMPLATE (125B)



EFFECTS LAYOUTS © 2019
For DIY and small commercial applications.
Not for non-peer to peer resale.