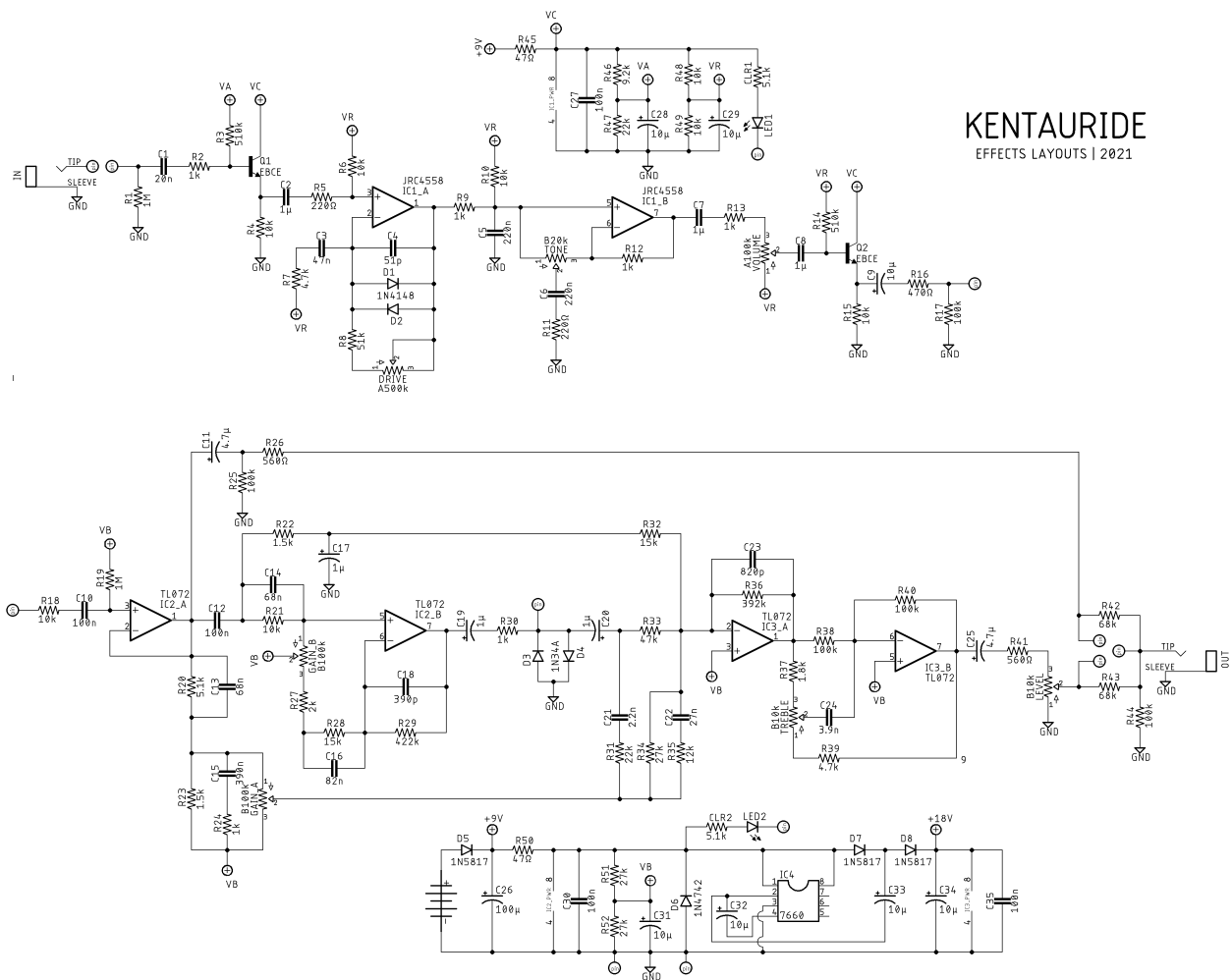


# KENTAURIDE

## DESCRIPTION

The KENTAURIDE came about after listening to too much John Mayer and researching his gear setup. Two staples of his board are an Ibanez TS10 Tube Screamer and a silver Klon Centaur. On my personal board I don't have a ton of real estate, so I wanted to see if I could fit both in a 125B. Somehow it all fits and gives a good bit of tonal variety in a small footprint.

## SCHEMATIC



KENTAURIDE  
EFFECTS LAYOUTS | 2021

## BOM

### Resistor

R1	1M
R2	1k
R3	510k
R4	10k
R5	220Ω
R6	10k
R7	4.7k
R8	51k
R9	1k
R10	10k
R11	220Ω
R12	1k
R13	1k
R14	510k
R15	10k
R16	470Ω
R17	100k
R18	10k
R19	1M
R20	5.1k
R21	10k
R22	1.5k
R23	1.5k
R24	1k
R25	100k
R26	560Ω
R27	2k
R28	15k
R29	422k
R30	1k
R31	22k
R32	15k
R33	47k
R34	27k
R35	12k
R36	392k
R37	1.8k
R38	100k
R39	4.7k
R40	100k
R41	560Ω
R42	68k

R43	68k
R44	100k
R45	47Ω
R46	9.2k
R47	22k
R48	10k
R49	10k
R50	47Ω
R51	27k
R52	27k
CLR1	4.7k
CLR2	4.7k

### Capacitors

C1	20n
C2	1μ
C3	47n
C4	51p
C5	220n
C6	220n
C7	1μ
C8	1μ
C9	10μ
C10	100n
C11	4.7μ
C12	100n
C13	68n
C14	68n
C15	390n
C16	82n
C17	1μ
C18	390p
C19	1μ
C20	1μ
C21	2.2n
C22	27n
C23	820p
C24	3.9n
C25	4.7μ
C26	100μ
C27	100n
C28	10μ
C29	10μ

C30	100n
C31	10μ
C32	10μ
C33	10μ
C34	10μ
C35	100n

#### Semiconductors

D1	1N4148
D2	1N4148
D3	1N34A
D4	1N34A
D5	1N5817
D6	1N4742a
D7	1N5817
D8	1N5817
IC1	JRC4558
IC2	TL072
IC3	TL072
IC4	ICL7660SCPA
LED1	3 or 5mm
LED2	3 or 5mm
Q1	NPN silicon
Q2	NPN silicon

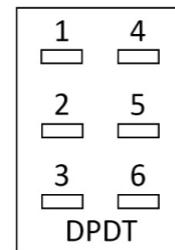
#### Electromechanical

Drive	A500k
Tone	B20k
Volume	A100k
Gain	B100k dual gang
Treble	B10k
Level	B10k

#### Note

An extra emitter pad is provided for Q1 and Q2 so BCE transistors like the 2SC1815 (as used in the original TS10) or CBE pinout transistors like the 2N3904, 2N5088, etc.

The Klone side requires a DPDT footswitch. Wire the pads to the corresponding lugs numbered like this:

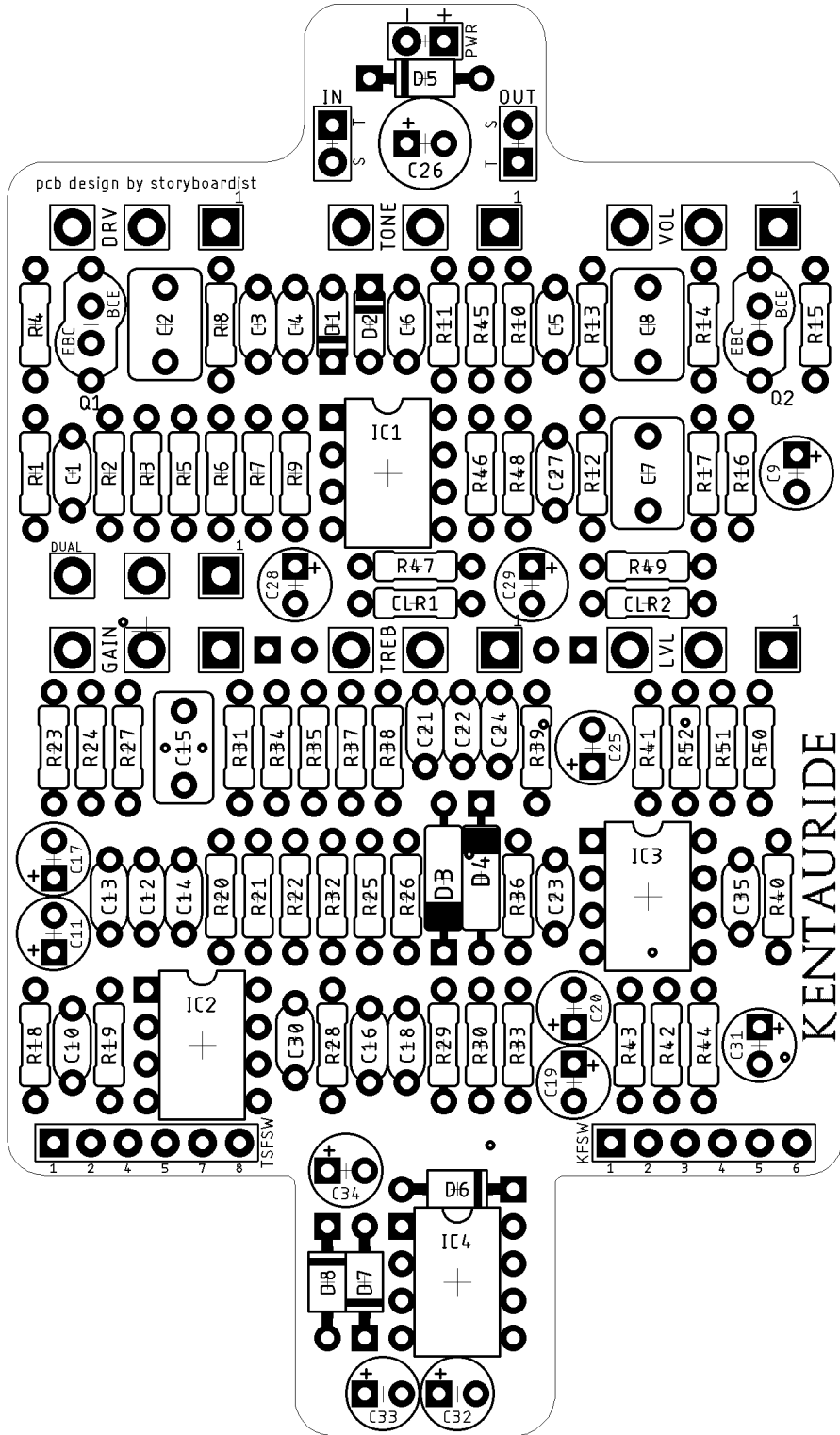


#### SHOPPING LIST

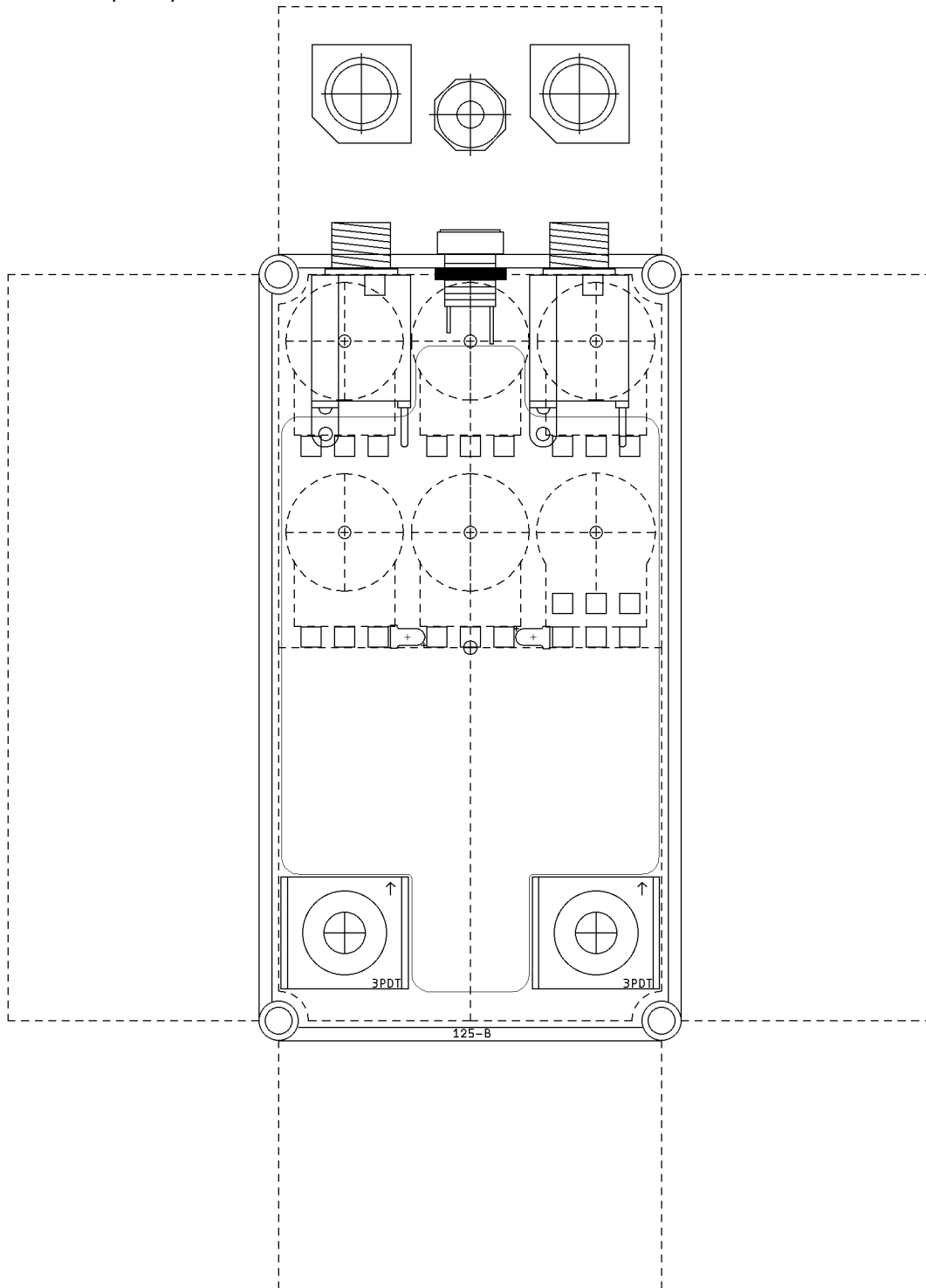
Value	Type (suggested)	Quantity
47Ω	¼ watt metal or carbon film	2
220Ω	¼ watt metal or carbon film	2
470Ω	¼ watt metal or carbon film	1
560Ω	¼ watt metal or carbon film	2
1k	¼ watt metal or carbon film	6
1.5k	¼ watt metal or carbon film	2
1.8k	¼ watt metal or carbon film	1
2k	¼ watt metal or carbon film	1
4.7k	¼ watt metal or carbon film	4
5.1k	¼ watt metal or carbon film	1
9.2k	¼ watt metal or carbon film	1
10k	¼ watt metal or carbon film	8
12k	¼ watt metal or carbon film	1
15k	¼ watt metal or carbon film	2
22k	¼ watt metal or carbon film	2

27k	¼ watt metal or carbon film	3
47k	¼ watt metal or carbon film	1
51k	¼ watt metal or carbon film	1
68k	¼ watt metal or carbon film	2
100k	¼ watt metal or carbon film	5
392k	¼ watt metal or carbon film	1
422k	¼ watt metal or carbon film	1
510k	¼ watt metal or carbon film	2
1M	¼ watt metal or carbon film	2
51p	Ceramic	1
390p	Ceramic	1
820p	Ceramic	1
2.2n	Film	1
3.9n	Film	1
20n	Film	1
27n	Film	1
47n	Film	1
68n	Film	2
82n	Film	1
100n	Film	5
220n	Film	2
390n	Film	1
1μ	Film	3
1μ	Electrolytic (25v+)	3
4.7μ	Electrolytic (25v+)	2
10μ	Electrolytic (25v+)	7
100μ	Electrolytic (25v+)	1
1N34A	Germanium diode	2
1N4148	Switching diode	2
1N4742a	12v zener diode	1
1N5817	Schottky rectifier diode	3
ICL7660SCPA	Voltage converter	1
JRC4558	Dual opamp	1
LED	3 or 5mm	2
TL072	Dual opamp	2
NPN silicon	BJT	2
A100k	16 mm right angle PC mount	1
A500k	16 mm right angle PC mount	1
B20k	16 mm right angle PC mount	1
B10k	16 mm right angle PC mount	2
B100k	Dual gang 16 mm right angle PC mount	1

LAYOUT



**DRILL TEMPLATE (125B)**



EFFECTS LAYOUTS © 2021  
For DIY and small commercial applications.  
Not for non-peer to peer resale.