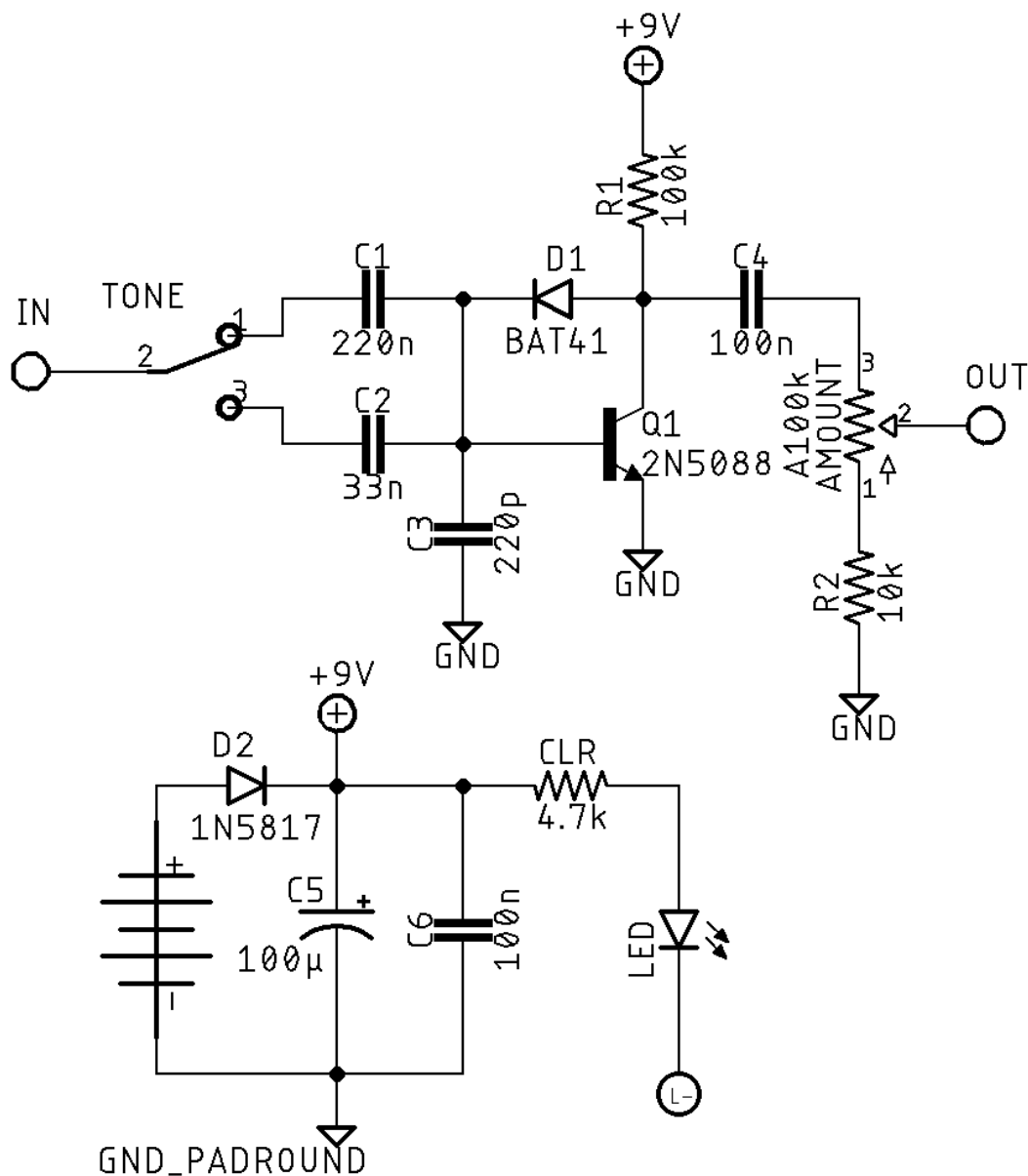


# BOOTLEGGER

## DESCRIPTION

The BOOTLEGGER is one of those circuits that shouldn't sound as good as it does, given its low parts count, but packs a huge punch. It's based on the DIY classic Bazz Fuss and takes inspiration from the (now discontinued) Walrus Audio Contraband Fuzz. The switch changes the input capacitor, providing thick or thin options for beefing up single coils or thinning out humbuckers, but there's very useable in either position regardless of pickup type.

## SCHEMATIC



## BOM

### Resistors

R1	100k
R2	10k
CLR	4.7k

### Capacitors

C1	220n
C2	33n
C3	220p
C4	100n
C5	100μ

C6	100n
----	------

### Semiconductors

D1	BAT41
D2	1N5817
LED	3 or 5mm LED
Q1	2N3904

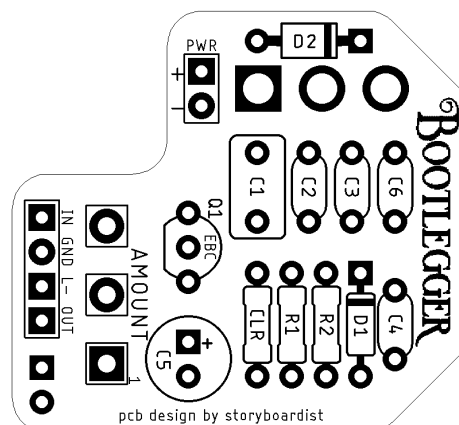
### Electromechanical

Amount	A100k
Tone	SPDT on/on

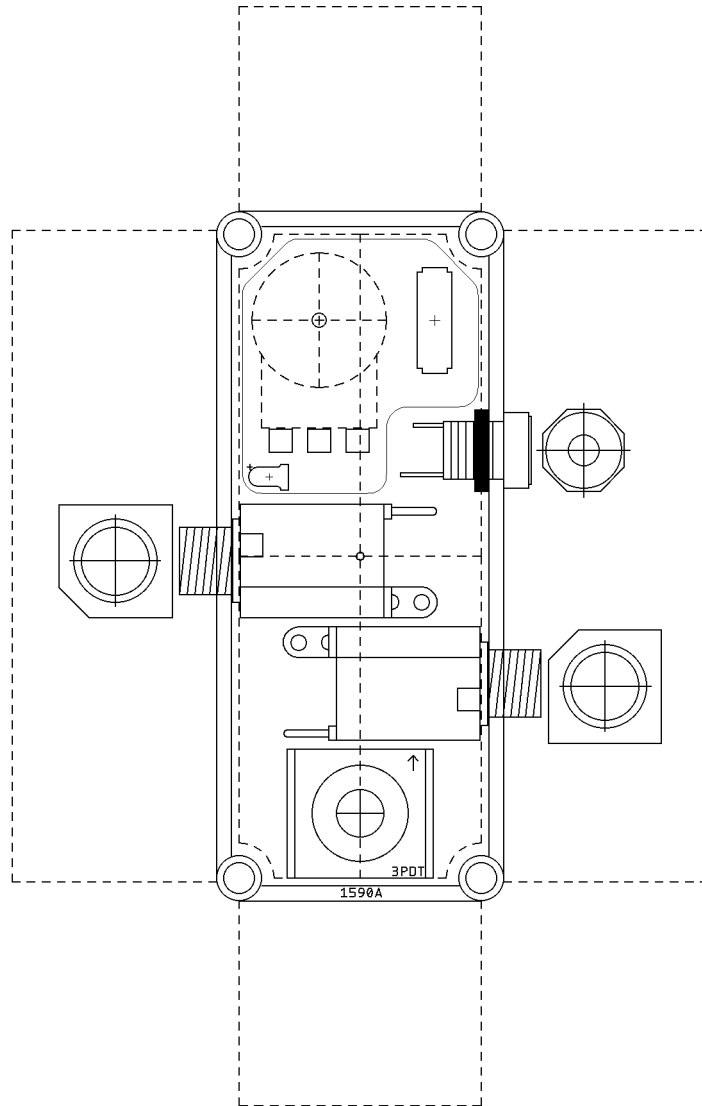
## SHOPPING LIST

Value	Type (suggested)	Quantity
4.7k	¼ watt metal or carbon film	1
10k	¼ watt metal or carbon film	1
100k	¼ watt metal or carbon film	1
220p	Ceramic	1
33n	Film	1
100n	Film	2
220n	Film	1
100μ	Electrolytic (25v+)	1
1N5817	Schottky rectifier diode	1
2N3904	BJT	1
BAT41	Small signal Schottky diode	1
LED	3 or 5mm	1
A100k	16mm right angle PC mount	1
SPDT	On/on toggle	1

## LAYOUT



## DRILL TEMPLATE (1590A)



EFFECTS LAYOUTS © 2021  
For DIY and small commercial applications.  
Not for non-peer to peer resale.