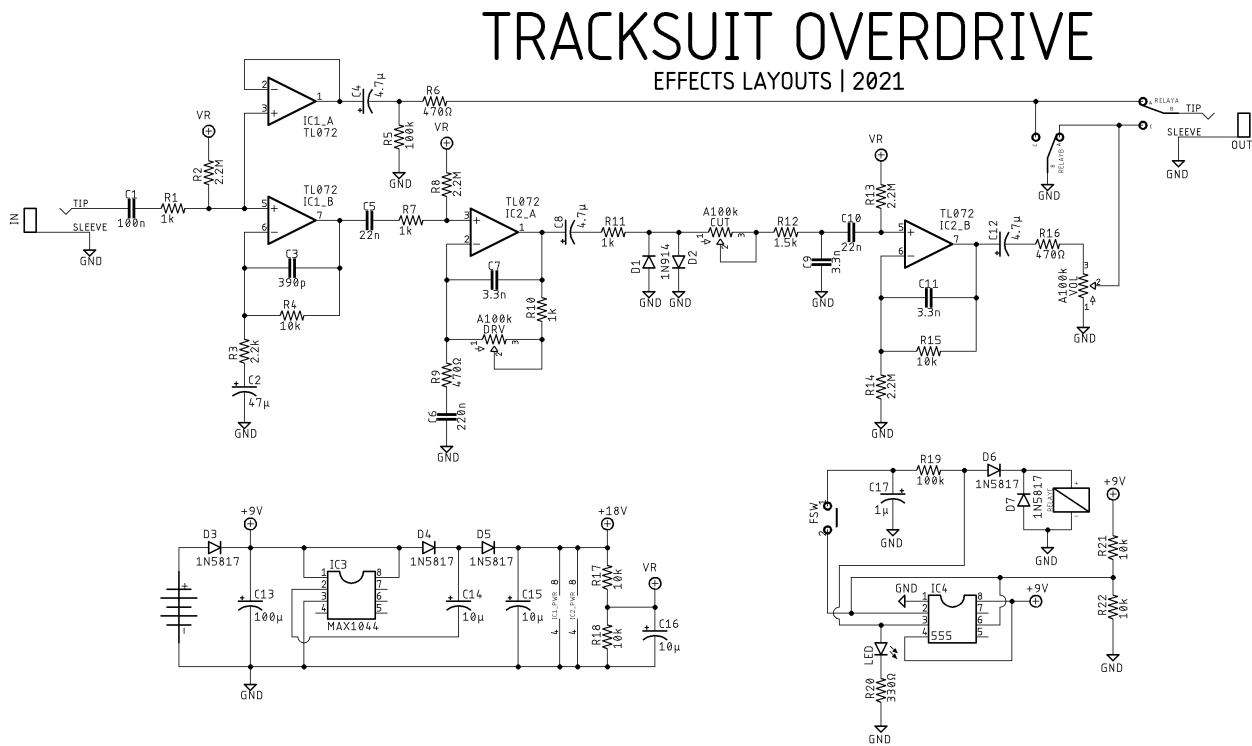


tracksuit overdride

DESCRIPTION

The TRACKSUIT gets its name from the three stripes on the pedal it's based on, the 1981 Innovations DRV. This variant is closer to the original than my first variant, the Nezumi, without any real modifications and the addition of Incandenza relay bypass built onto the board.

SCHEMATIC



BOM

Resistors

R1	1k
R2	2.2M
R3	2.2k
R4	10k
R5	100k
R6	470Ω
R7	1k
R8	2.2M
R9	470Ω
R10	1k
R11	1k
R12	1.5k
R13	2.2M
R14	2.2M
R15	10k
R16	470Ω
R17	10k
R18	10k
R19	100k
R20	330Ω
R21	10k
R22	10k

Capacitors

C1	100n
C2	47μ
C3	390p
C4	4.7μ
C5	22n
C6	220n
C7	3.3n
C8	4.7μ

C9	3.3n
C10	22n
C11	3.3n
C12	4.7μ
C13	100μ
C14	10μ
C15	10μ
C16	10μ
C17	1μ

Semiconductors

D1	1N914/1N4148
D2	1N914/1N4148
D3	1N5817
D4	1N5817
D5	1N5817
D6	1N5817
D7	1N5817
IC1	TL072
IC2	TL072
IC3	MAX1044
IC4	555
LED	3 or 5mm LED

Electromechanical

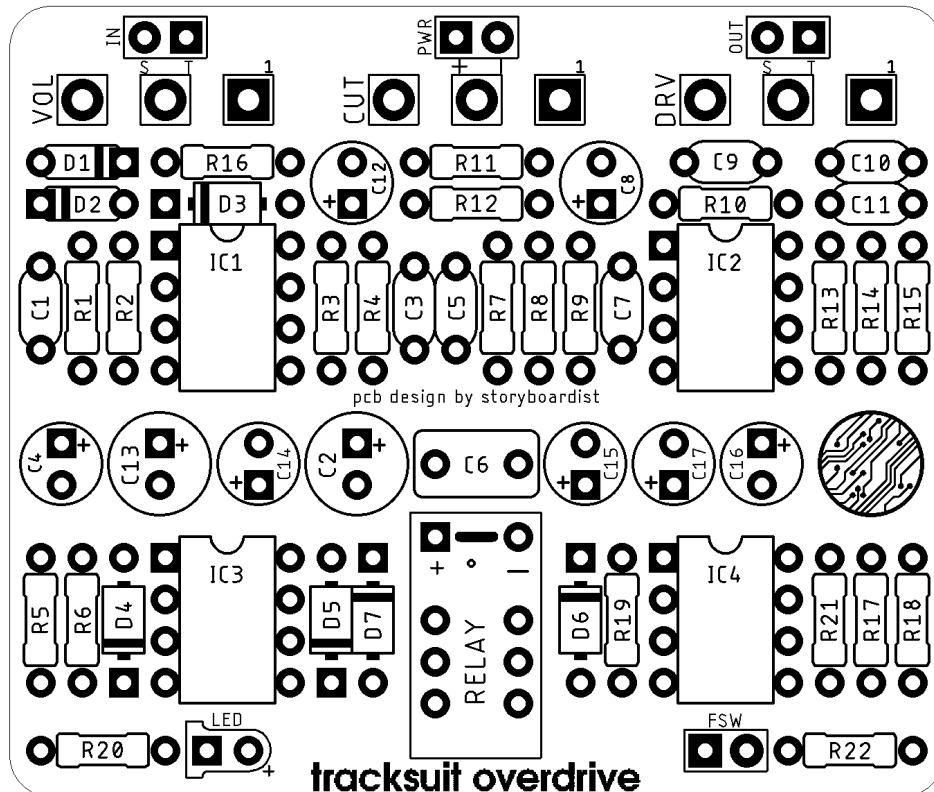
CUT	A100k
FSW	Momentary footswitch
DRV	A100k
VOL	A100k
Relay	Omron G6S-2 or Takamisawa NA5W-K

SHOPPING LIST

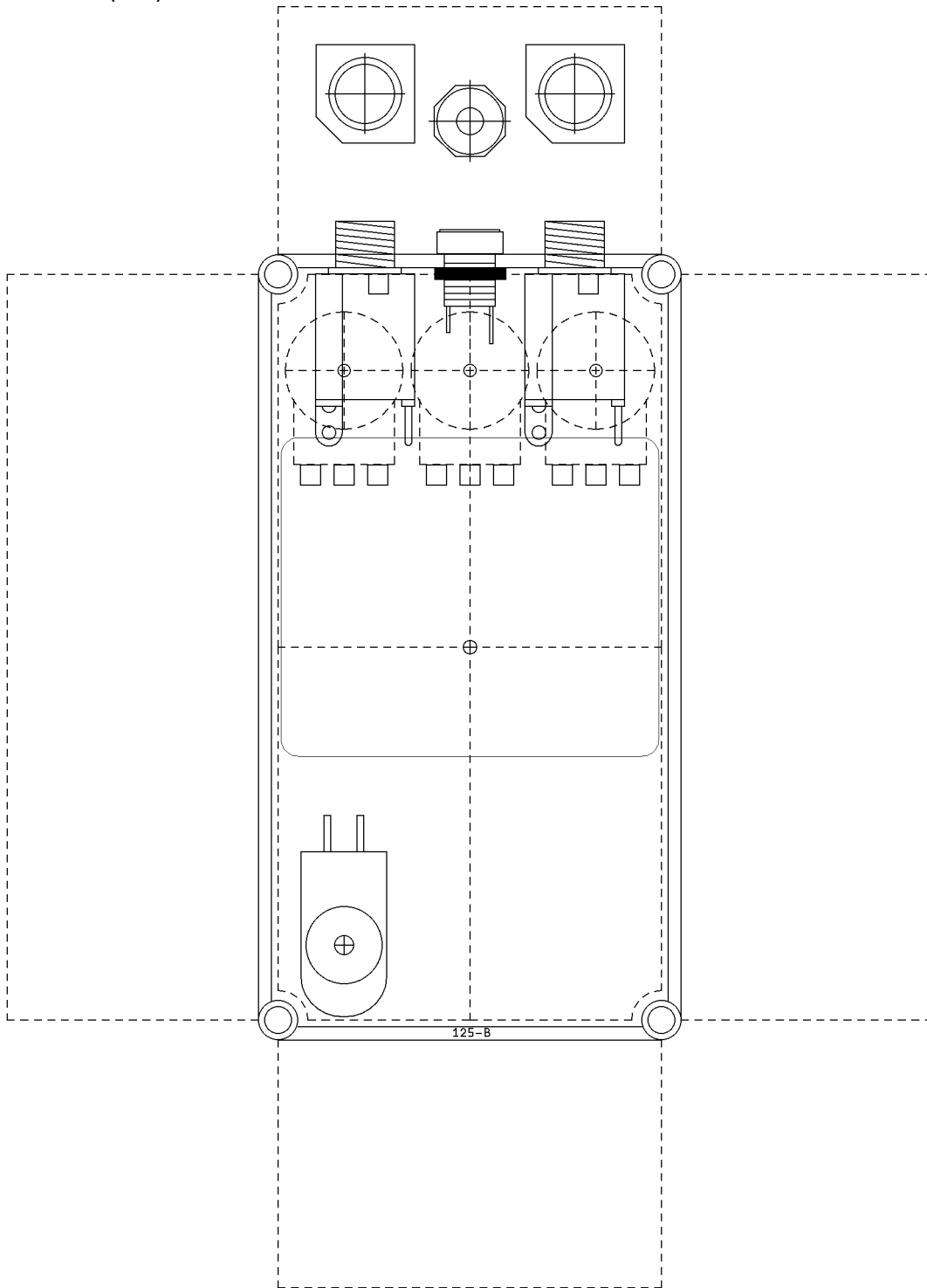
Value	Type (suggested)	Quantity
330Ω	¼ watt metal or carbon film	1
470Ω	¼ watt metal or carbon film	3
1k	¼ watt metal or carbon film	4
1.5k	¼ watt metal or carbon film	1
2.2k	¼ watt metal or carbon film	1
10k	¼ watt metal or carbon film	6
100k	¼ watt metal or carbon film	2

2.2M	¼ watt metal or carbon film	4
390p	Ceramic	1
3.3n	Film	3
22n	Film	2
100n	Film	1
220n	Film	1
1µ	Electrolytic (25v+)	1
4.7µ	Electrolytic (25v+)	3
10µ	Electrolytic (25v+)	3
47µ	Electrolytic (25v+)	1
100µ	Electrolytic (25v+)	1
1N914/1N4148	Silicon switching diode	2
1N5817	Schottky rectifier diode	5
TL072	Dual op-amp	2
MAX1044	Charge pump	1
555	Timer	1
LED	3 or 5mm LED	1
A100k	16mm right angle PC mount	3
Footswitch	Momentary normally open	1
G6S-2 or NA5W-K	5v DPDT relay	1

LAYOUT



DRILL TEMPLATE (125)



EFFECTS LAYOUTS © 2021
For DIY and small commercial applications.
Not for non-peer to peer resale.