

BILL OF MATERIALS

Resistors

R1	1k
R2	1M
R3	1M
R4	27k
R5	33k
R6	47k
R7	1M
R8	1M
R9	10k
R10	220k
R11	6.8k
R12	1k
R13	6.8k
R14	100k
R15	10k
R16	220k
R17	390k
R18	68k
R19	1M
R20	100k
R21	4.7k
R22	1k
R23	10k
R24	10k
CLR	4.7k

Capacitors

C1	47p
C2	1 μ
C3	47p
C4	10n
C5	10n
C6	100n
C7	100p
C8	4.7 μ
C9	10n
C10	10n
C11	470p
C12	4.7n

C13	330p
C14	3.3n
C15	4.7 μ
C16	47p
C17	1 μ
C18	1 μ
C19	100 μ
C20	100n
C21	10 μ

Semiconductors

D1	1N4148
D2	1N4148
D3	1N4148
D4	1N4148
D5	1N4148
D6	1N4148
D7	1N5817
IC1	JRC4580
IC2	JRC4580
LED	3/5mm LED

Electromechanical

Bass	B1M
Clip	DPDT on/off/on
Drive	B100k
Gain	SPDT on/off/on
Presence	B50k
Treble	B25k
Volume	A100k

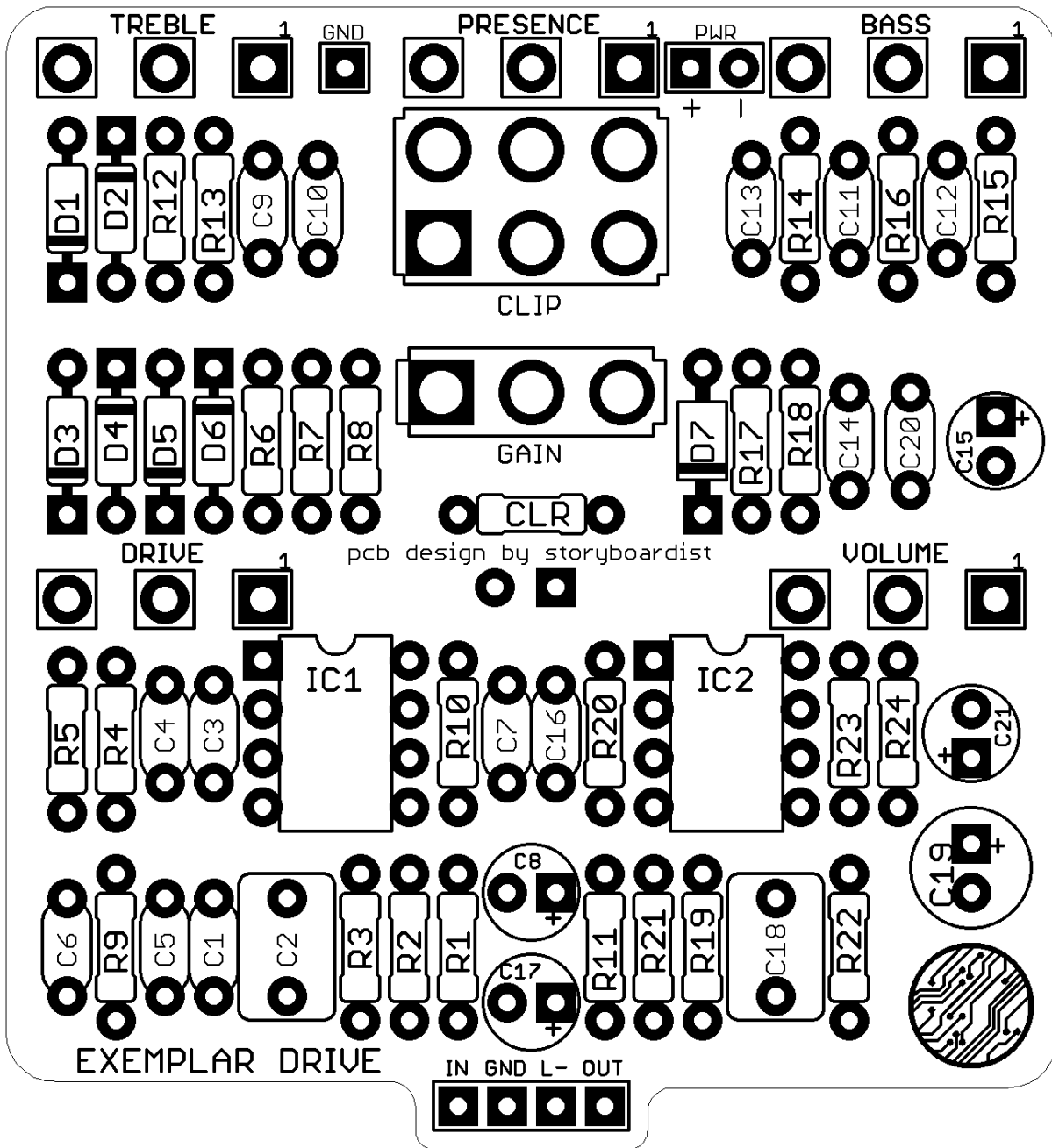
Notes

Other dual opamps can be used (TL072, JRC4558, NE5532, etc.), so adjust to taste. The clipping switch could be replaced by a DPDT on/on/on if you'd rather the middle position of the toggle be bot sets of clipping diodes in the circuit. Similarly, a DPDT on/on can be used for just soft or hard clipping.

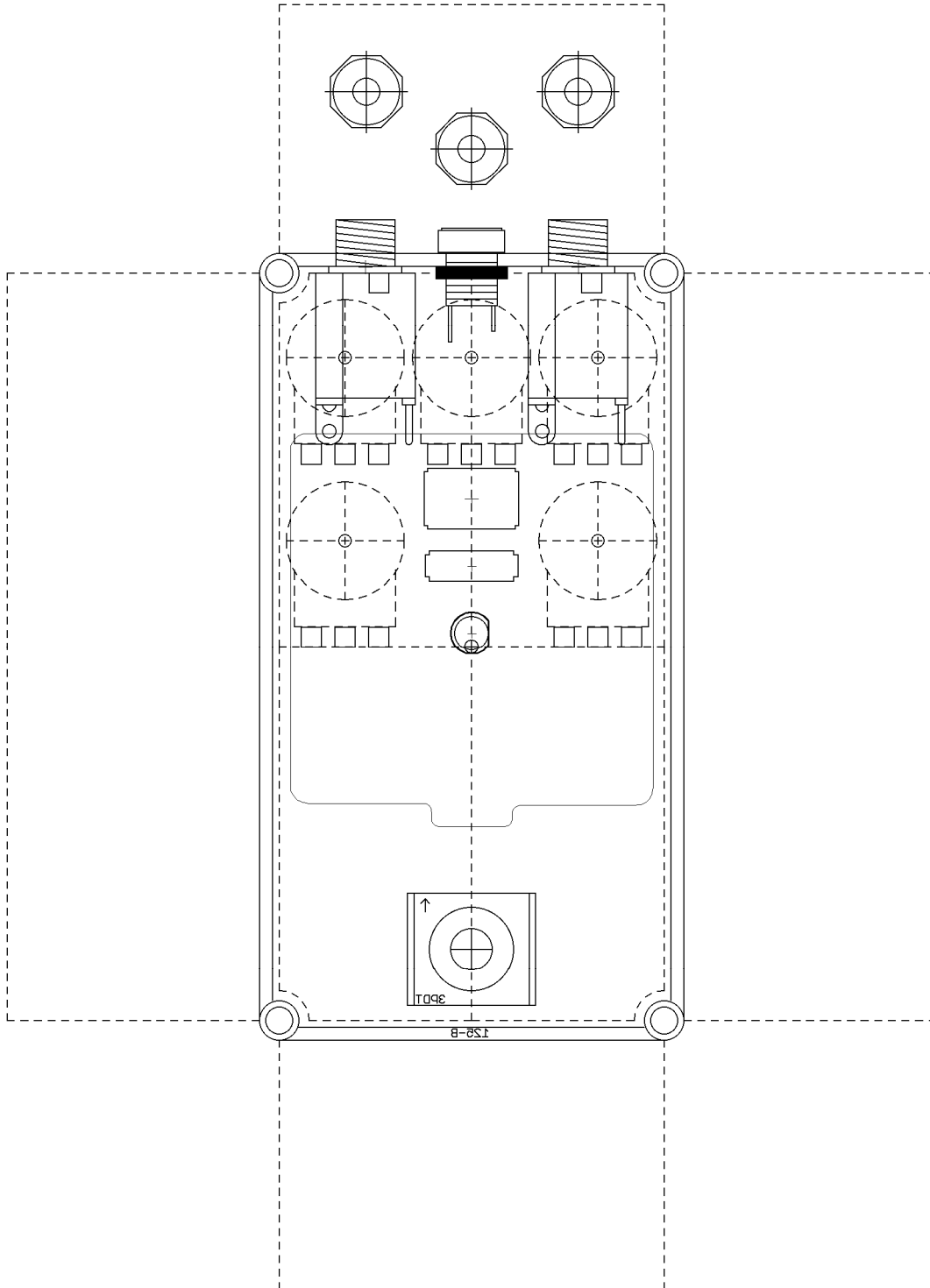
SHOPPING LIST

Value	Type (suggested)	Quantity
1k	¼ watt metal or carbon film	3
4.7k	¼ watt metal or carbon film	2
6.8k	¼ watt metal or carbon film	2
10k	¼ watt metal or carbon film	4
27k	¼ watt metal or carbon film	1
33k	¼ watt metal or carbon film	1
47k	¼ watt metal or carbon film	1
68k	¼ watt metal or carbon film	1
100k	¼ watt metal or carbon film	2
220k	¼ watt metal or carbon film	2
390k	¼ watt metal or carbon film	1
1M	¼ watt metal or carbon film	5
47p	Ceramic (63v or higher)	3
100p	Ceramic (63v or higher)	1
330p	Ceramic (63v or higher)	1
470p	Ceramic (63v or higher)	1
3.3n	Film (63v or higher)	1
4.7n	Film (63v or higher)	1
10n	Film (63v or higher)	4
100n	Film (63v or higher)	2
1μ	Film (63v or higher)	2
1μ	Electrolytic (35v or higher)	1
4.7μ	Electrolytic (35v or higher)	2
10μ	Electrolytic (35v or higher)	1
100μ	Electrolytic (35v or higher)	1
1N4148		6
1N5817		1
LED	3/5mm	1
JRC4580	Dual opamp	2
SPDT on/off/on	Toggle switch	1
DPDT on/off/on	Toggle switch	1
A100k (audio/log)	16mm right angle PC mount	1
B25k (linear)	16mm right angle PC mount	1
B50k (linear)	16mm right angle PC mount	1
B100k (linear)	16mm right angle PC mount	1
B1M (linear)	16mm right angle PC mount	1

LAYOUT



DRILL TEMPLATE (125B)



EFFECTS LAYOUTS © 2018
For DIY and small commercial applications.
Not for non-peer to peer resale.

